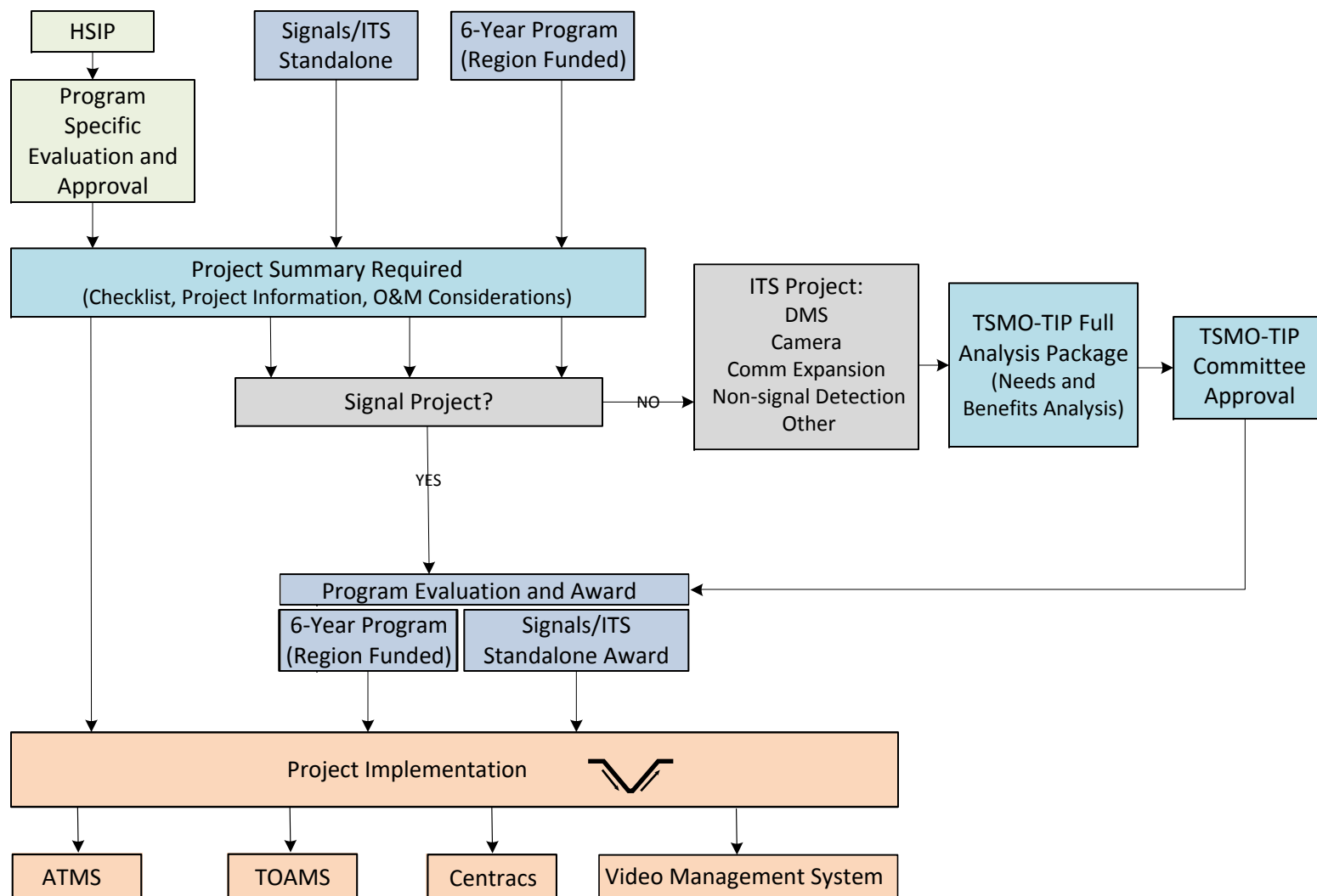




# NEW SIGNAL AND ITS PROJECTS DOCUMENTATION REQUIREMENTS FLOW DIAGRAM

Wisconsin Department of Transportation / Bureau of Traffic Operations

First, consider the potential anticipated funding source:



Note: If the project does not follow typical funding sources, contact State ITS Engineer for project documentation requirements.