

# Overview of the Work Zone Design Process

---

## Disclaimers:

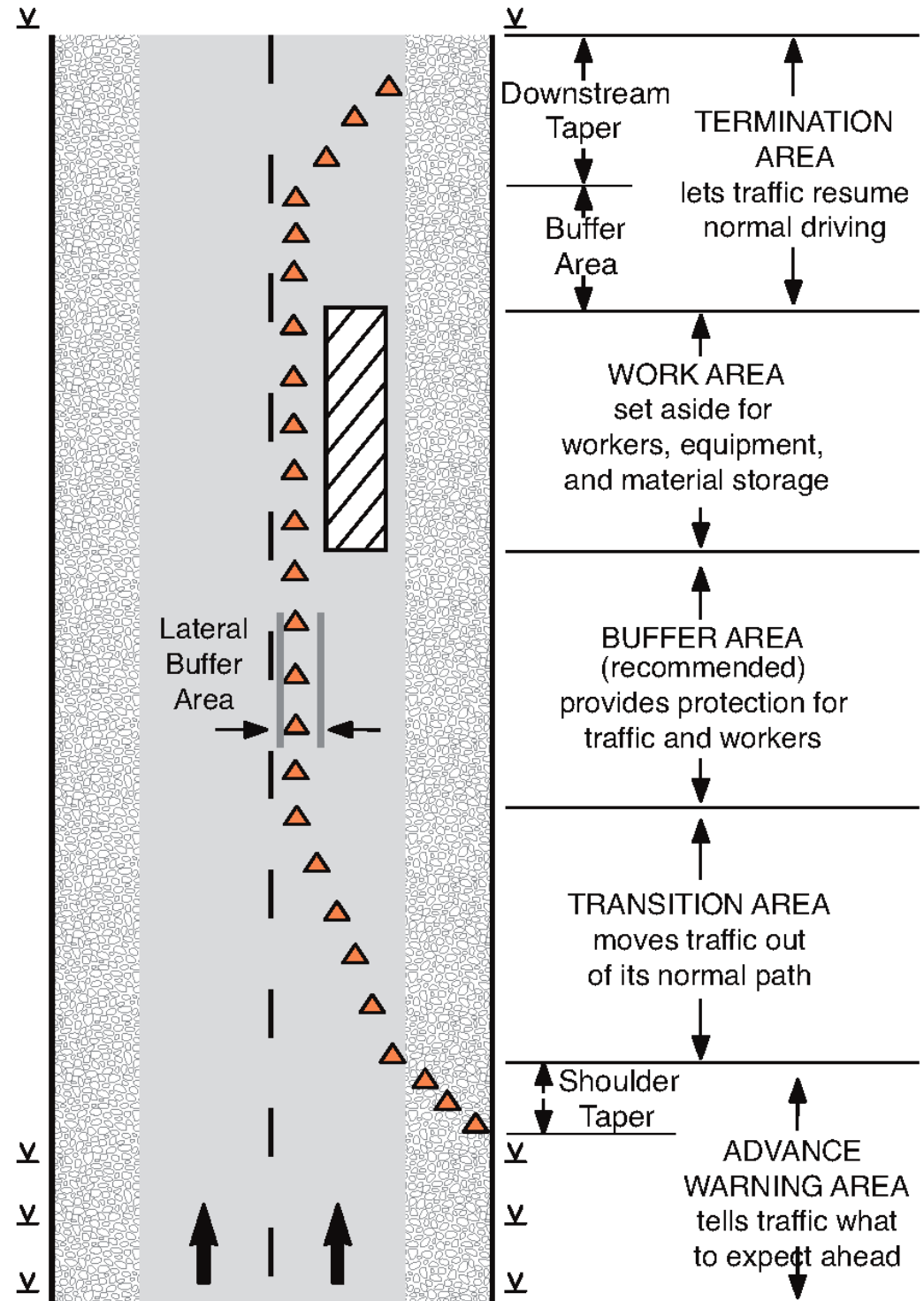
- This material is based upon work supported by the U.S. Department of Transportation under Cooperative Agreement No. 693JJ31750005
- Any opinions, findings and conclusions or recommendations expressed in this publication are those of the author(s) and do not necessarily reflect the view of the U.S. Department of Transportation. This publication does not constitute a national standard, specification, or regulation.
- The U.S. Government does not endorse products or manufacturers. Trademarks or manufacturers' names appear in this document only because they are considered essential to the objective of the document.

# Learning Objectives

- Review work zone terminology and design elements
- Discuss TMP's
- Review design resources
- Discuss fundamental principles
- Consider design issues
- Examine project constructability and staging

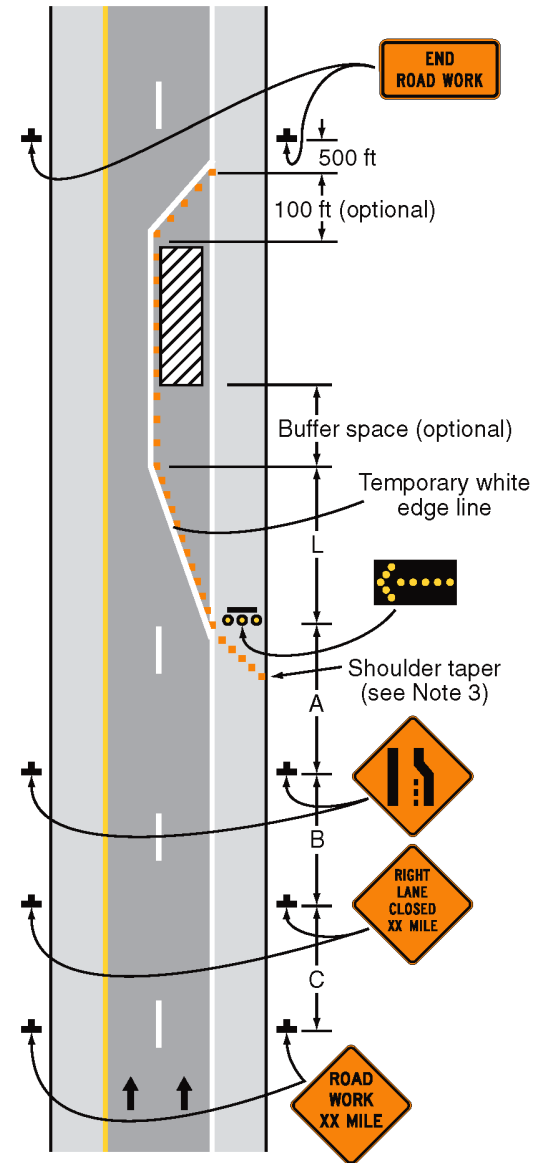
# Work Zone Terminology

# Work Zone Elements



# Example Lane Closure

- Single lane closure
  - 2 lane divided highway



# Example Lane Closure

- Advance signing

Speed Limit (mph)	Sign Spacing (ft)			Merging Taper (ft) for 12' lane	Buffer (ft)
	A	B	C		
30	200	200	200	180	200
35	350	350	350	245	250
40	350	350	350	320	305
45	500	500	500	540	360
50	1000	1500	2640	600	425
55	1000	1500	2640	660	495
60	1000	1500	2640	720	570
65	1000	1500	2640	780	645

# Example Lane Closure

Speed Limit (MPH)	Sign Spacing (ft)			Merging Taper (ft) for 12' lane	Buffer (ft)
	A	B	C		
55	1000	1500	2640	660	495

$$L = W \times S$$

$$W = 12 \text{ ft}$$

$$S = 55 \text{ mph}$$

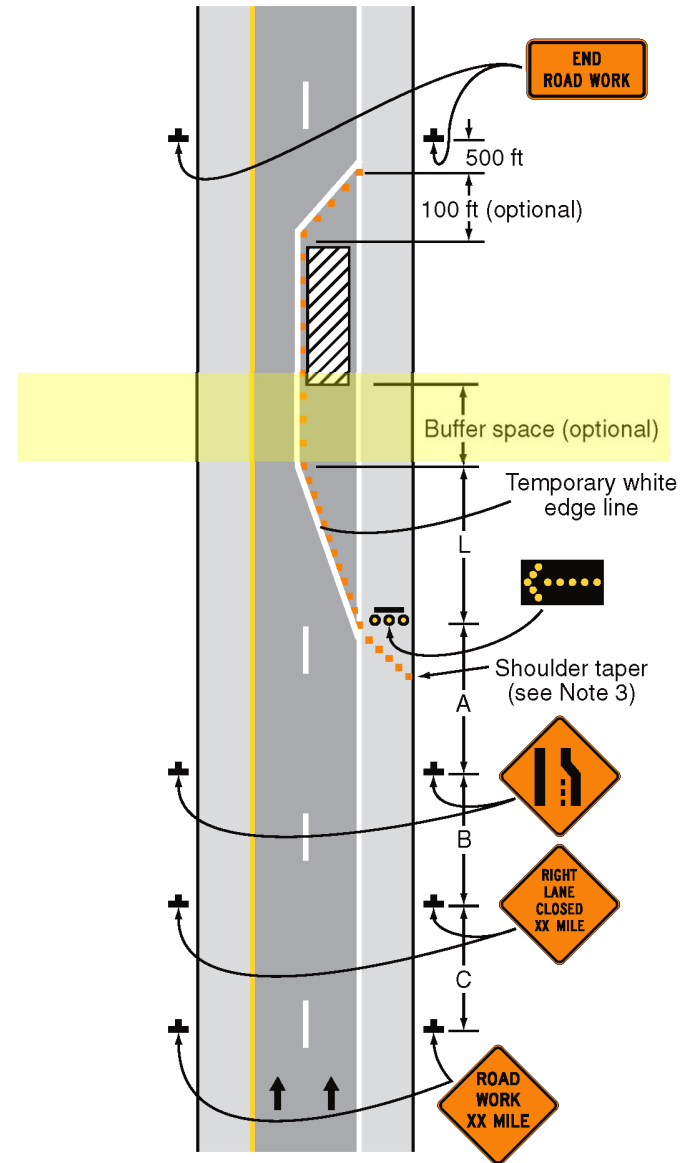
$$L = 12 \times 55$$

$$L = 660 \text{ ft}$$



# Example Lane Closure

- Buffer space



# Example Lane Closure

Speed Limit (MPH)	Sign Spacing (ft)			Merging Taper (ft) for 12' lane	Buffer (ft)
	A	B	C		
55	1000	1500	2640	660	495

## Buffer Lengths

A buffer area is recommended to separate traffic from the work area or oncoming vehicles and provide recovery space for an errant vehicle. The buffer area should not include any work activity nor storage of equipment, vehicles or material.

### *Suggested Buffer Lengths*

Speed (mph)	Length (ft)	Speed (mph)	Length (ft)
20	115	45	360
25	155	50	425
30	200	55	495
35	250	60	570
40	305	65	645

A lateral buffer area may also be used. Its width should be based on conditions at the work site.

# Challenges for Designers

- What can you do if the site does not have enough space for the recommended buffer and taper lengths?
- How do horizontal and vertical curves affect the layout?

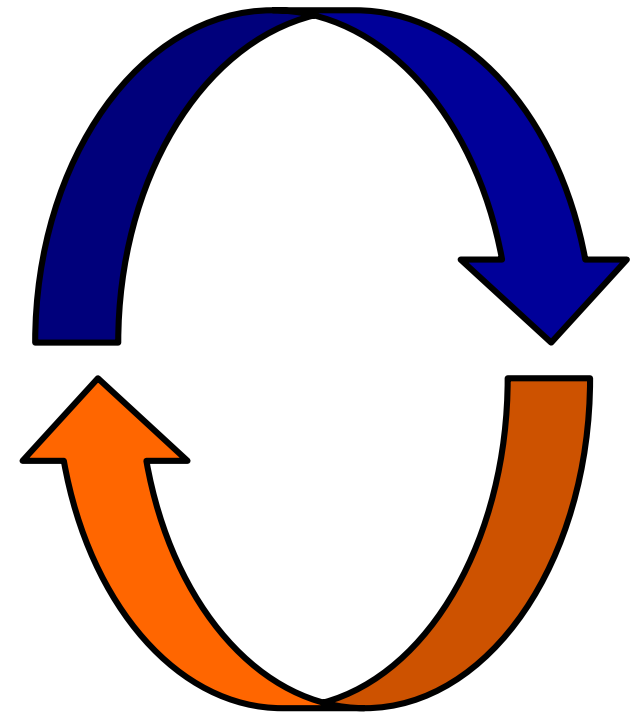
# Transportation Management Plans

---

# Background

- 2004: Federal Work Zone Safety & Mobility Rule established to help manage traffic and safety issues on federally-funded highway projects.
- 2007: Deadline for state Departments of Transportation (DOTs) to establish a work zone planning process – producing a Transportation Management Plan (TMP).
- 2016: TMP process generally considered “best practice” for all significant projects, regardless of funding.

Work Zone Crashes



Work Zone Congestion

# Goals of WZ Safety & Mobility Rule

## Project-Level

- Consider safety and mobility issues for all users as early as possible.
- Assure consistent, systematic consideration of construction traffic and safety impacts.
- Manage and mitigate impacts.

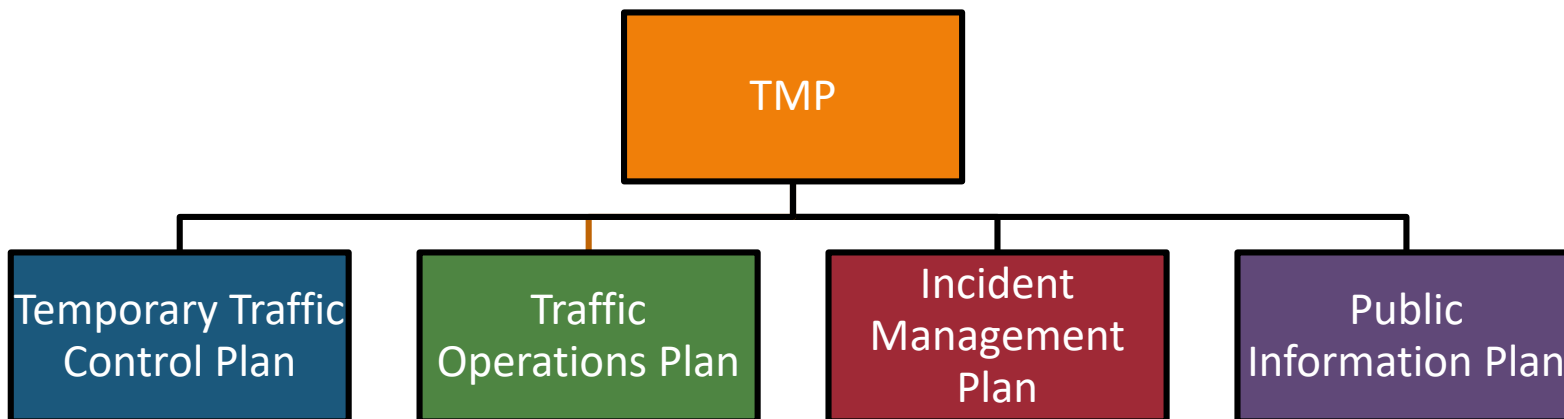
## Agency-Wide Programmatic

- Monitor and assess impacts of individual work zones and the construction program as a whole.
- Establish a data-driven process for long-term improvements to work zone policies and procedures.

# TMP Content Varies with Project Complexity

## Typical Elements

- Temporary Traffic Control (Maintenance of Traffic) Plan
- Traffic Operations Plan
- Traffic Incident Management Plan
- Public Information & Outreach Plan



# Why Do TMPs?

- TMP helps agency, contractor and first responders prepare for traffic issues unique to each site/project.
- TMP process has been successful in:
  - Improving travel conditions
  - Creating a better safety environment
  - Reducing complaints from the public.

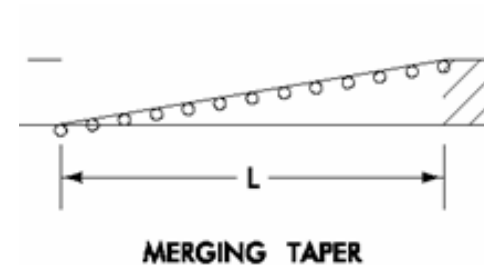


Source: FHWA Center for Accelerating Innovation



# Maintenance of Traffic (MOT) or Temporary Traffic Control (TTC) Plans

- A plan for safe and expeditious traffic movement and workforce safety
- How/when traffic is maintained during construction
- Sometimes not given proper time or attention
- Switches/stage changes often the most complicated and dangerous times



# Designer Responsibility to Translate the TMP into the PS&E

- Plan Sheet Drawings
- Specifications
  - Standard Construction Specifications
  - Special Provisions
- Estimated Quantities and Method of Payment

# Temporary Traffic Control Plan Components

- Traffic Staging/Phases
- Diversion/detour alignments
- Tapers and lane drops
- Pedestrian accommodations
- Temporary Traffic control (signals, sign type, sign location)
- Need for flaggers, etc.
- Illumination and warning lights
- Temporary Portable Concrete Barrier locations
- Pavement marking, drums, cones, and other channelization devices
- Policies for removal of signs, etc.
- Arrangements for worker parking
- Notes such as handling of signs that are not in use
- Permanent signs removed and temporary storage

# Some Factors to Consider

- Traffic speeds.
- Estimated traffic volumes, vehicle types, and direction of travel.
- Required number of travel lanes.
- Temporary traffic control layouts including signing, marking, channelization devices, traffic signals, traffic delineators, barriers, and detours.
- Restrictions on work periods such as rush hours, holidays, special events, nights, weekends.
- Characteristics of adjacent highway segments.
- Requirements for partial completion and opening sections to traffic.
- Available maneuvering space for traffic.
- Requirements for installing, maintaining, moving, or removing traffic control devices.
- Turns or cross movements required by traffic.

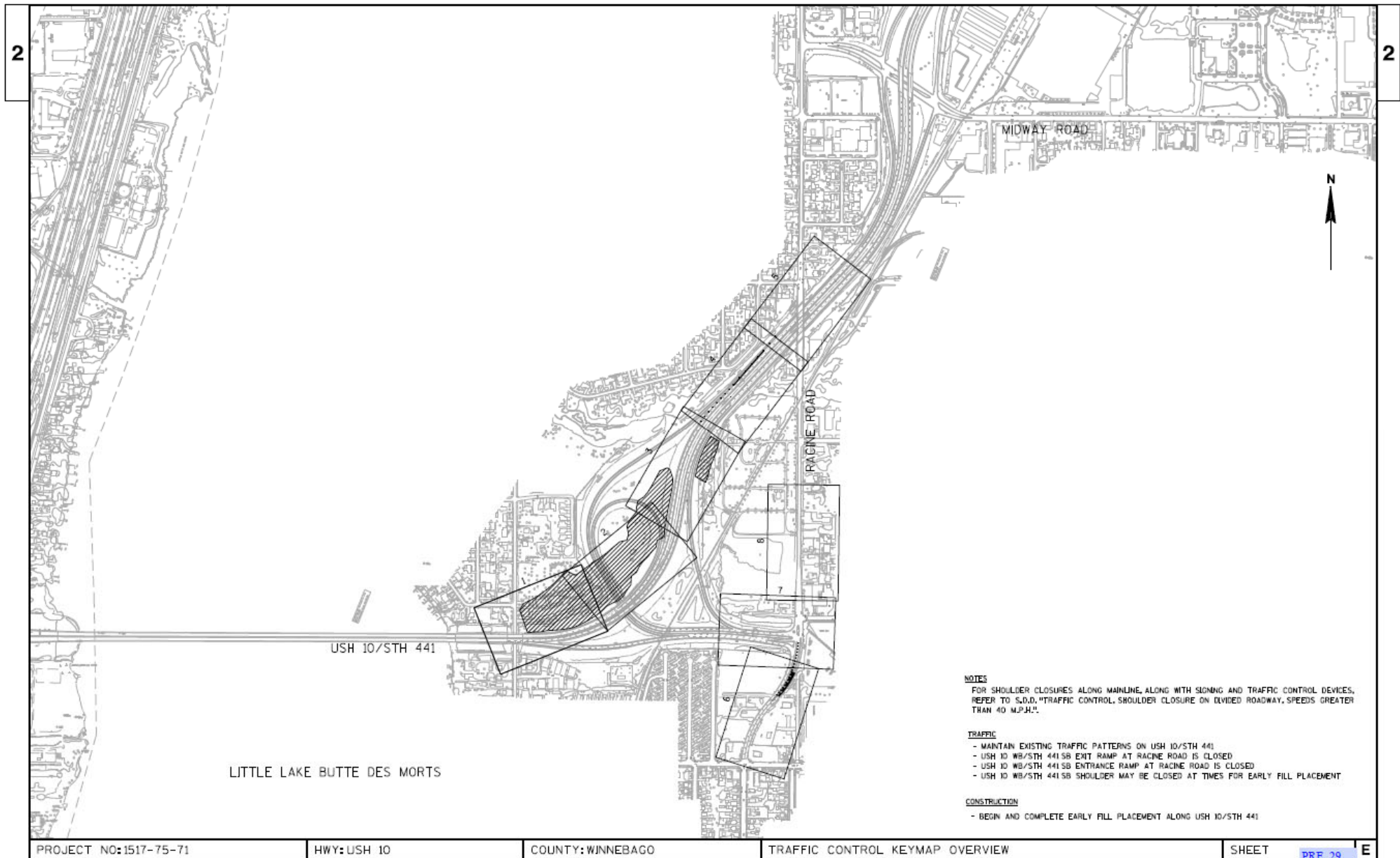
# Conditions Requiring Special Attention

- High volume or high-speed traffic.
- Rush hour or seasonal traffic patterns.
- Heavy use by pedestrians.
- Changing work conditions or other conditions that would be confusing to the traveling public.
- Hazards due to nighttime operations.
- Complex detours or traffic patterns.
- Closely spaced intersections, interchanges, or other decision points.

# Non-Contractual Considerations

- Contractor role in public outreach, if any
- Special agreements reached with other agencies relating to traffic control or traffic management (including pedestrians and transit)
- Crash reporting requirements
- Any special guidance on traffic management for the project engineer

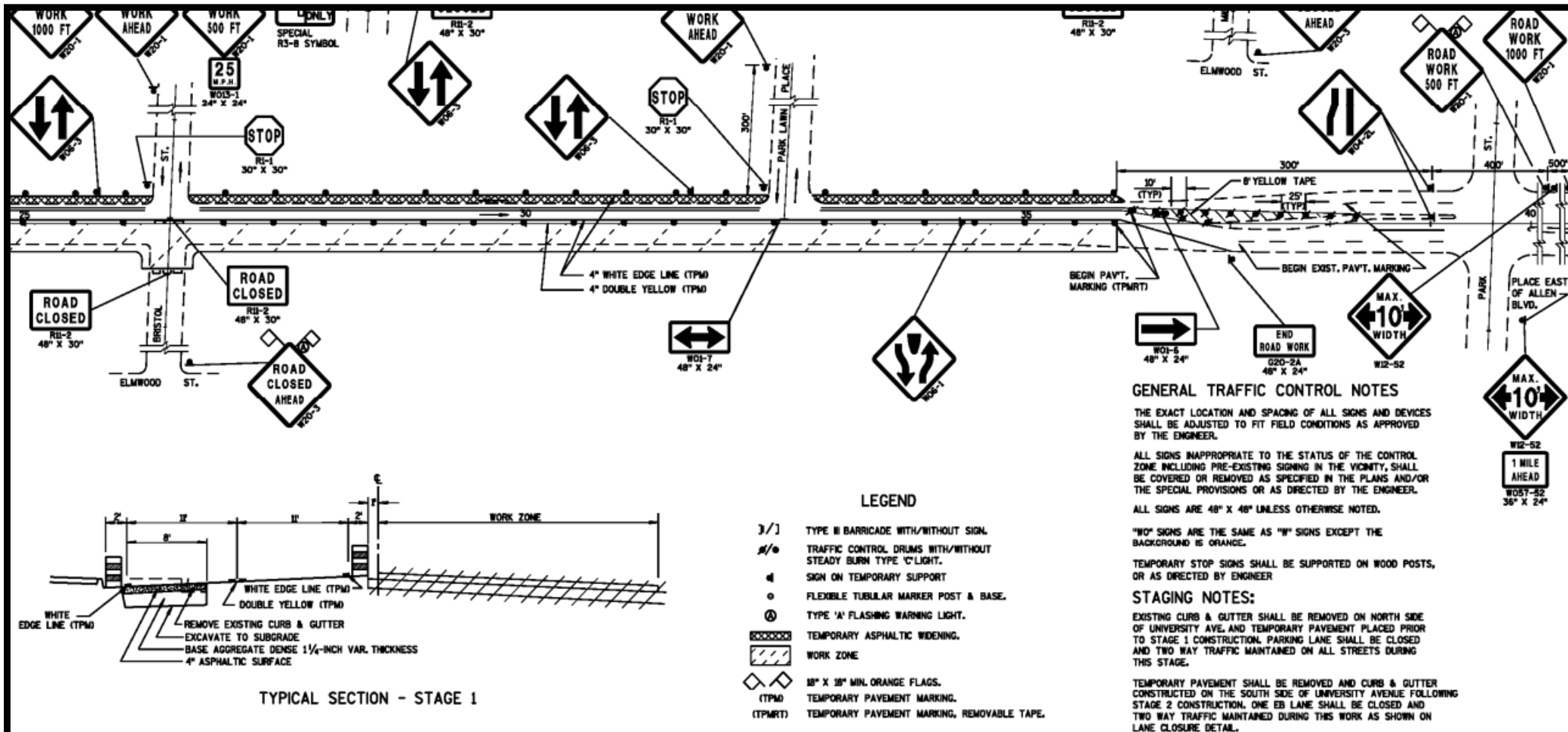
# TTC Plan Components - Overview Sheet







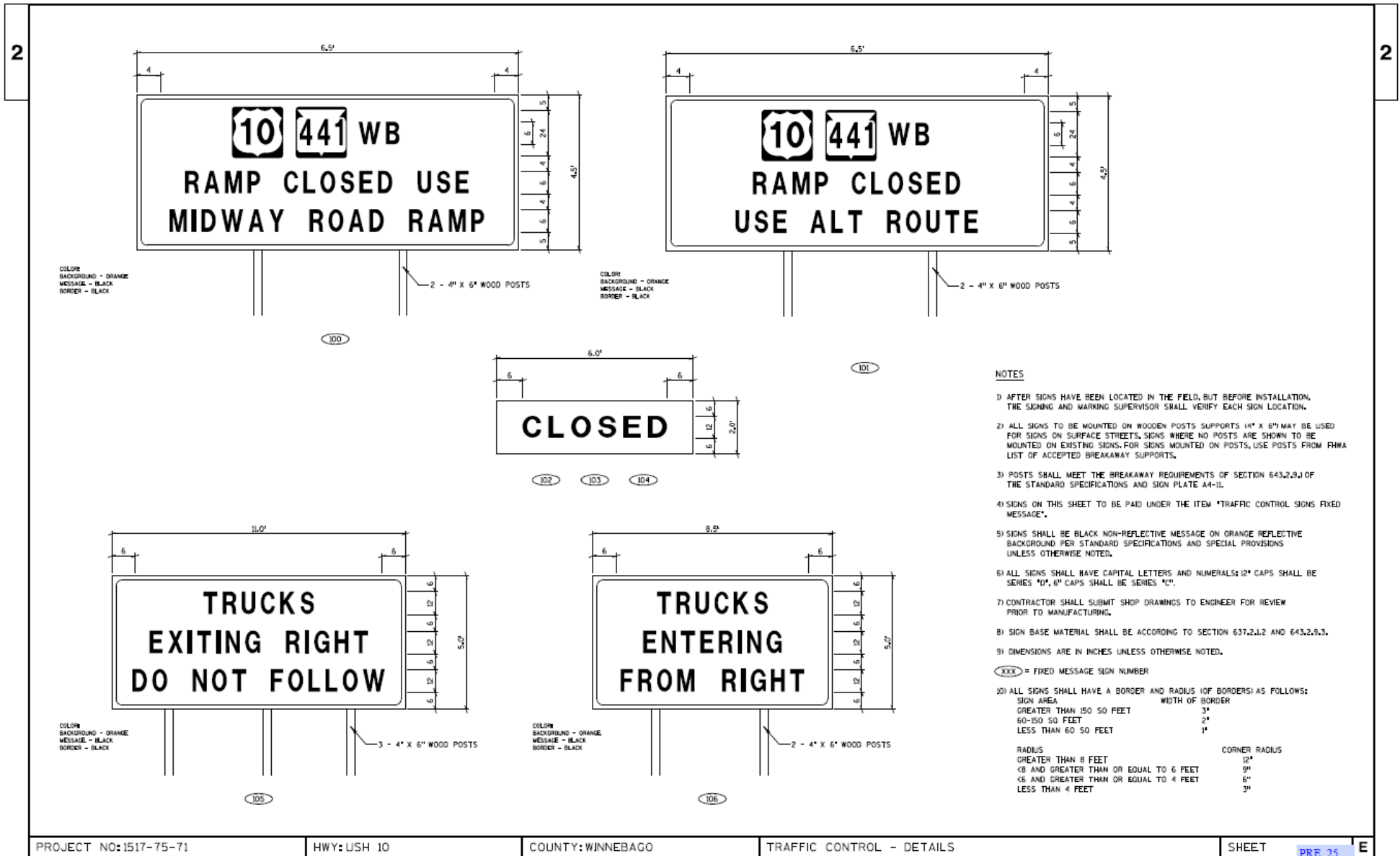
# Detail Sheets – Temporary Traffic Control Signing & Marking



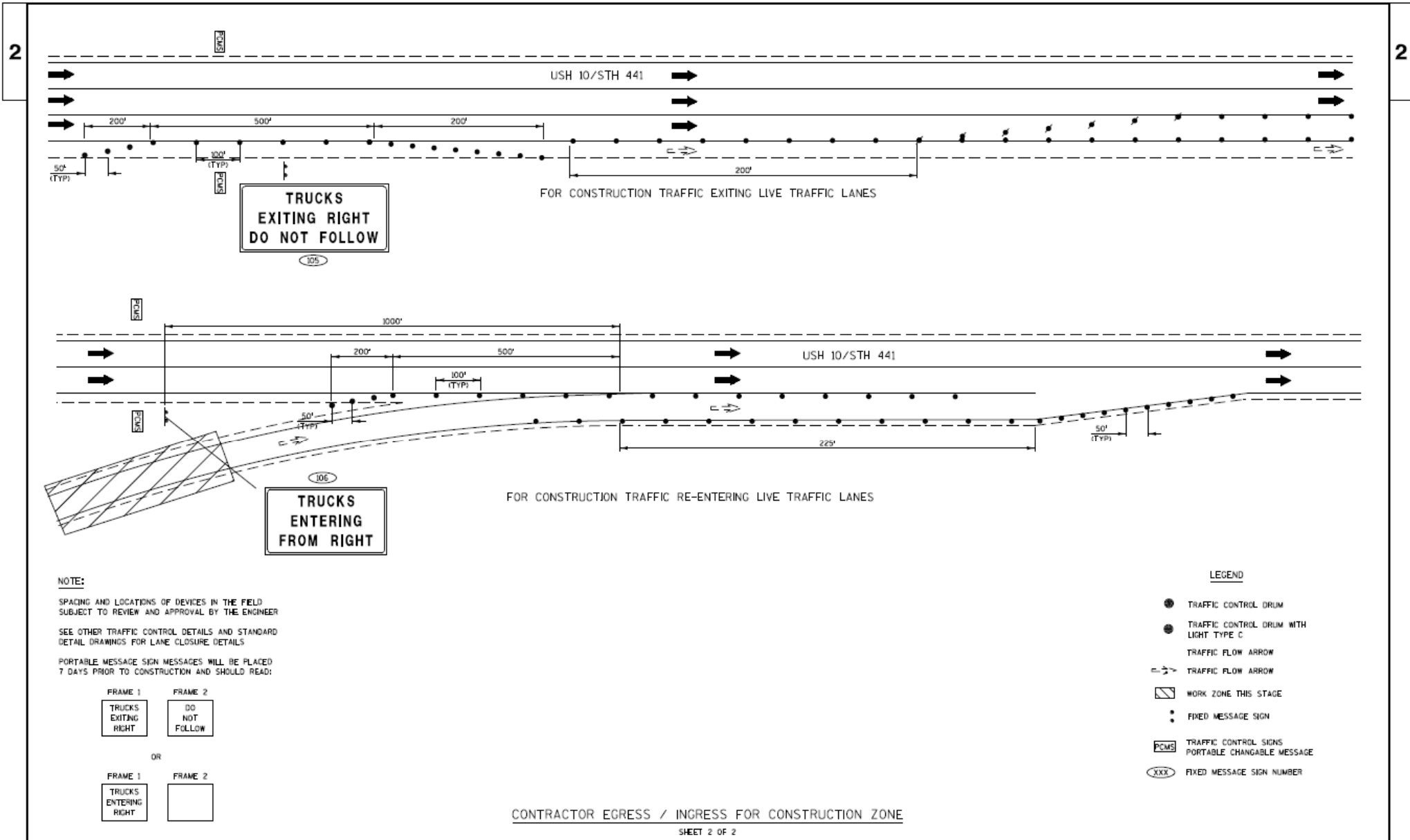
PROJECT NO: 5993-59-76	HWY: USH 14	COUNTY: DANE	TRAFFIC CONTROL/CONST. STAGING	SHEET NO: E
------------------------	-------------	--------------	--------------------------------	-------------



# Fixed Message Sign Details



# Construction Ingress and Egress



CONTRACTOR EGRESS / INGRESS FOR CONSTRUCTION ZONE

SHEET 2 OF 2

# Design Resources

---

# Designer Resources

## National

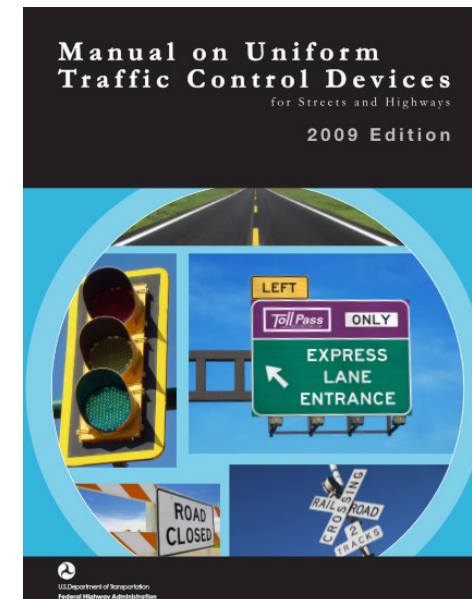
- Manual on Uniform Traffic Control Devices (MUTCD)
- AASHTO Roadside Design Guide
- NCHRP 581 (Design of Construction WZ's on High Speed Highways)
- FHWA Work Zone Safety Grant materials available from National Work Zone Safety Information Clearinghouse at [www.workzonesafety.org](http://www.workzonesafety.org)  
search: University of Wisconsin–Madison to find TOPS Lab Work Zone Designer Documents

## State-Specific

- State Design Manual/State WZ Traffic Control Manual
- Standard Detail Drawings
- Standard Specifications
- Materials Manuals
- Construction Manuals

# MUTCD

- Contains standards and guidance for design, installation, and maintenance of traffic control devices in work zones.
- Lists approved Temporary Traffic Control (TTC) devices (cones, drums, barricades, signs, etc.)
- Includes 46+ Typical Application Drawings illustrating various work zone traffic control layouts (mainly for smaller projects).
- Emphasizes the importance of accommodating **all** road users (including pedestrians, bikes, transit, motor vehicles, motorcycles, heavy trucks).



# Temporary Traffic Control Devices and Techniques

- Signs
- Portable Changeable Message Signs (PCMS)
- Barricades
- Cones
- Drums
- Vertical Panels
- Tubular Markers
- Pavement Marking
- Signals
- Flaggers
- Automated Flagger Assist Devices (AFADs)
- Positive Protection Devices (Barriers)
- Crash Attenuators
- Lighting





# MUTCD

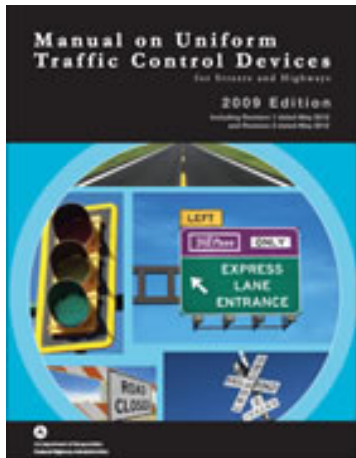
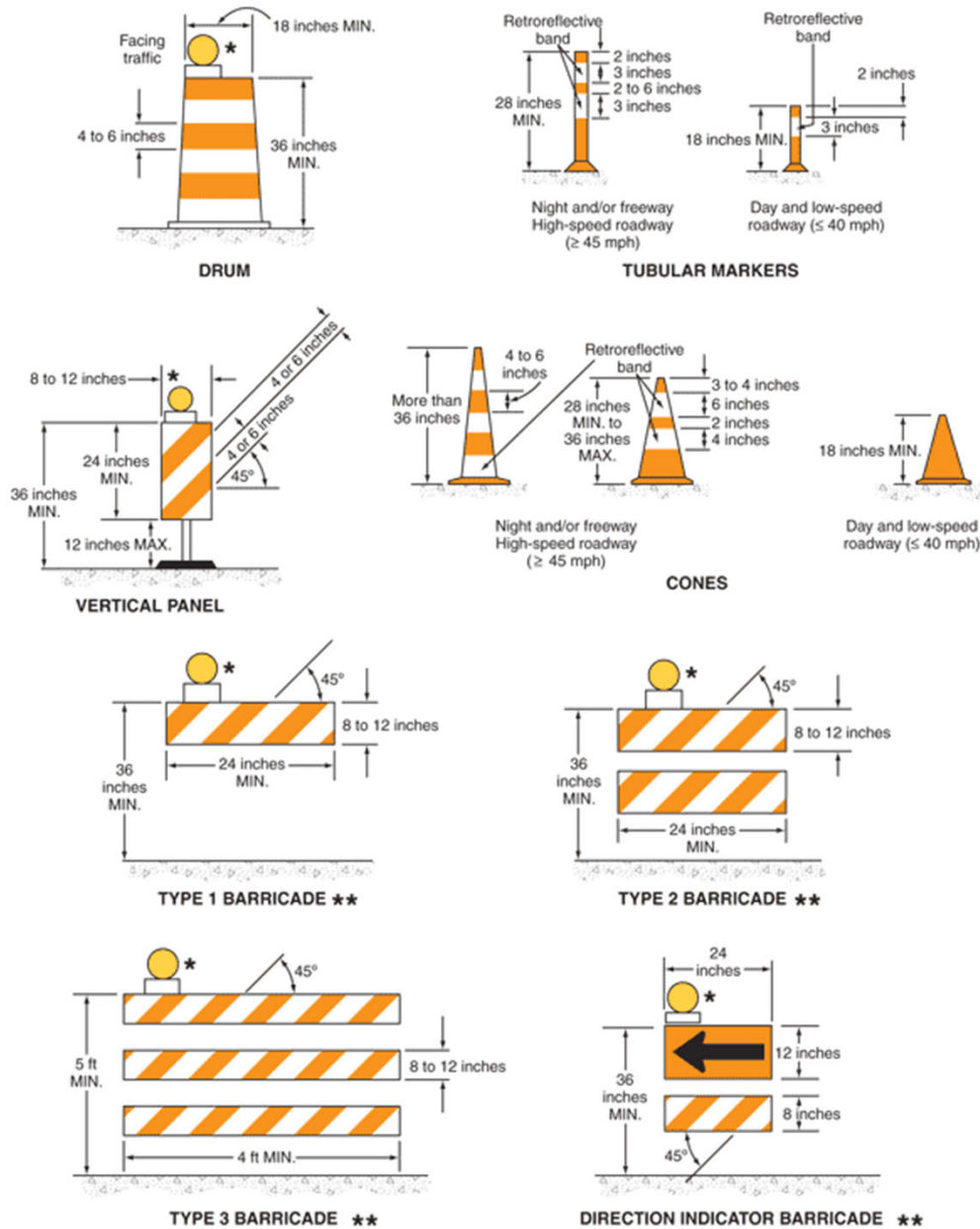
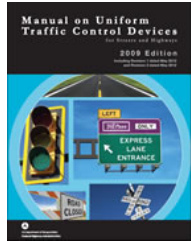


Figure 6F-7. Channelizing Devices



\* Warning lights (optional)

\*\* Rail stripe widths shall be 6 inches, except that 4-inch wide stripes may be used if rail lengths are less than 36 inches. The sides of barricades facing traffic shall have retroreflective rail faces.



# MUTCD Sign "Menu"

Figure 6F-4. Warning Signs and Plaques in Temporary Traffic Control Zones (Sheet 1 of 3)



Figure 6F-4. Warning Signs and Plaques in Temporary Traffic Control Zones (Sheet 2 of 3)

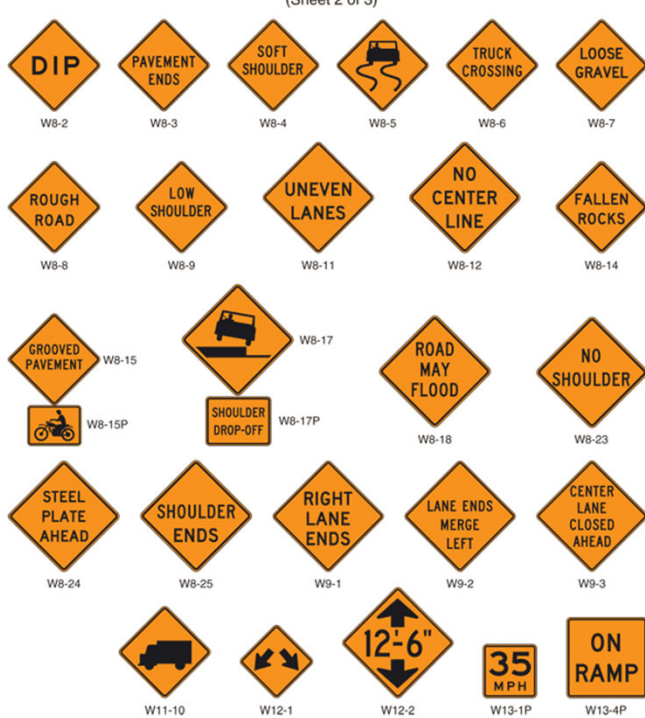
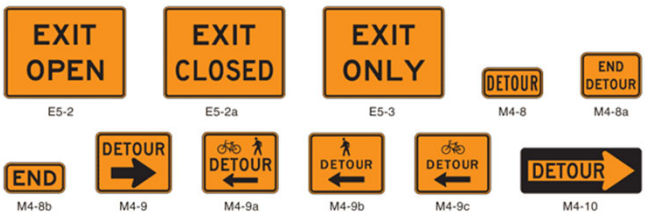


Figure 6F-4. Warning Signs and Plaques in Temporary Traffic Control Zones (Sheet 3 of 3)



\* An optional STREET WORK word message sign is shown in the "Standard Highway Signs and Markings" book.  
 \*\* An optional STREET CLOSED word message sign is shown in the "Standard Highway Signs and Markings" book.  
 \*\*\* An optional FLAGGER (W20-7a) word message sign is shown in the "Standard Highway Signs and Markings" book.  
 \*\*\*\* An optional FRESH TAR word message sign is shown in the "Standard Highway Signs and Markings" book.

Figure 6F-5. Exit Open and Closed and Detour Signs



# Unique or Special Situation Signs

What are your options if the sign you need/want is not on the MUTCD “menu”?

# Mounting Height

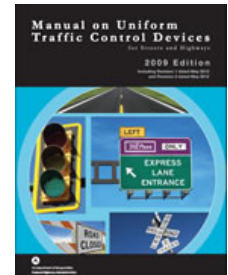


Figure 6F-1. Height and Lateral Location of Signs—Typical Installations

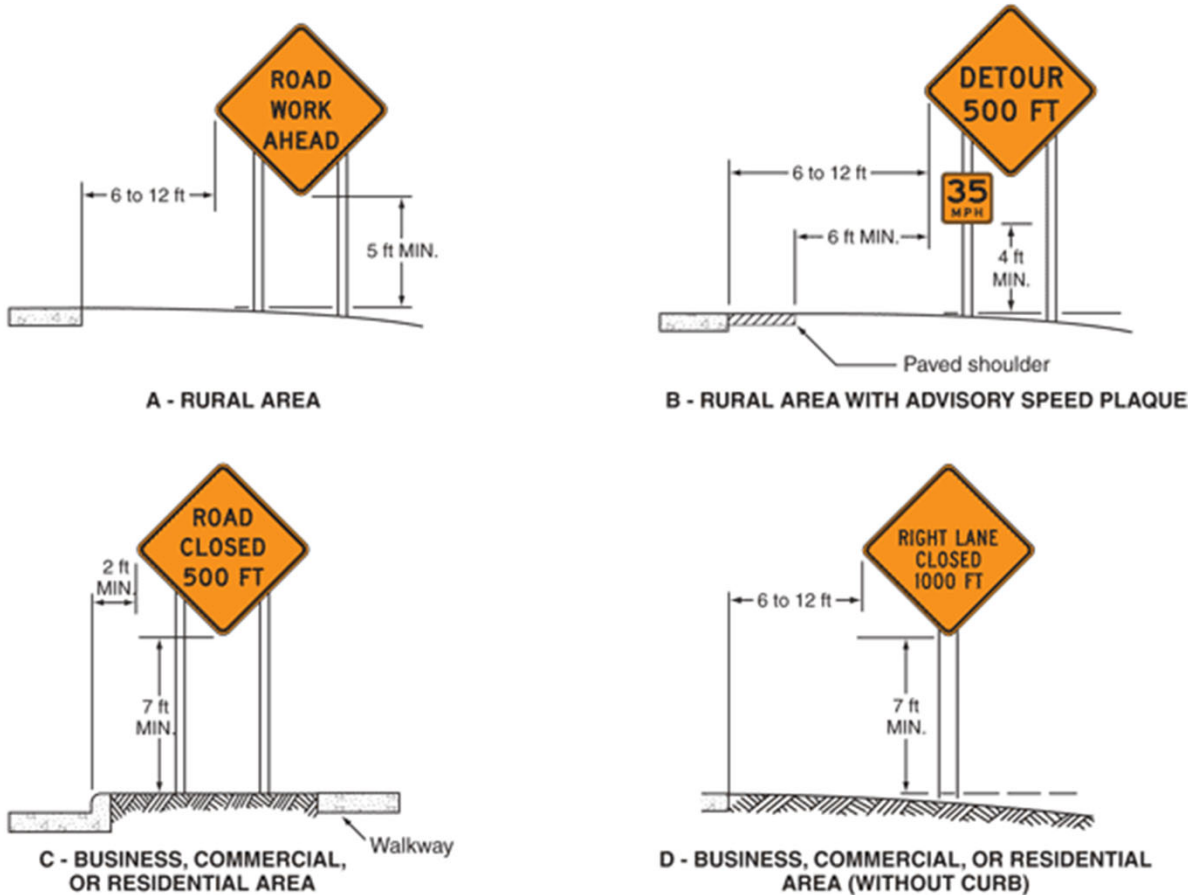
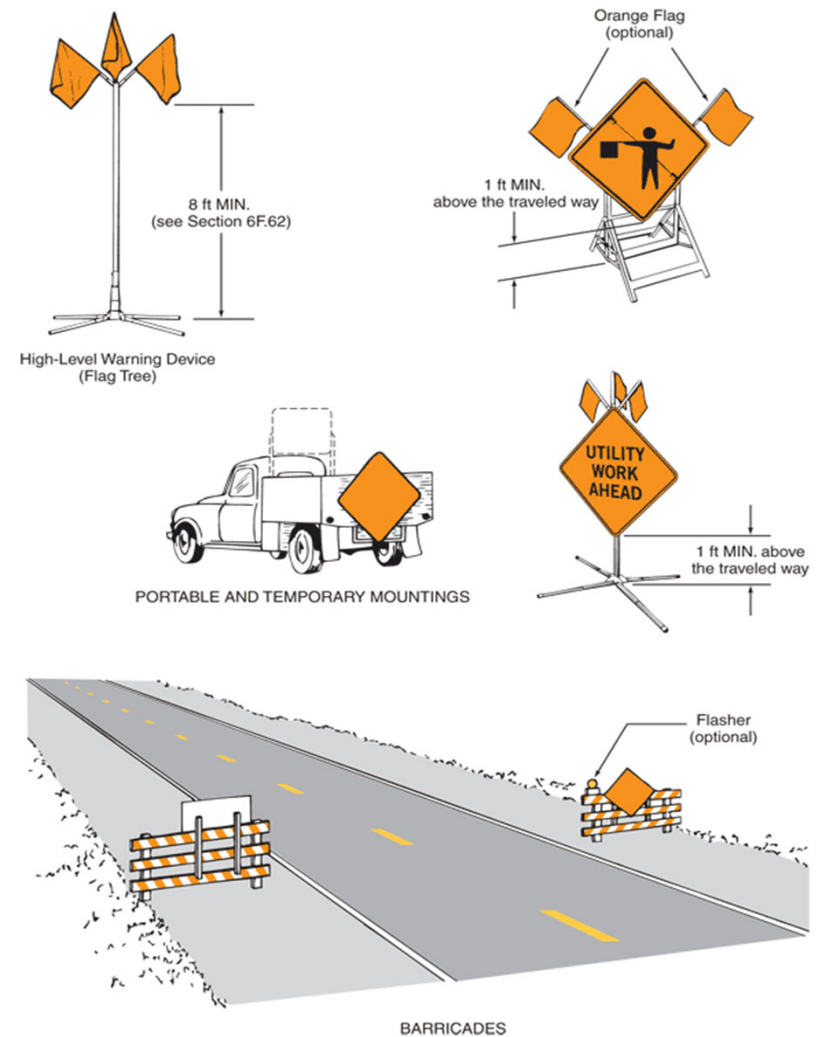


Figure 6F-2. Methods of Mounting Signs Other Than on Posts



# Specifying Crashworthy Devices

In the old days, Type III barricades were “sturdy.”  
This is the result.

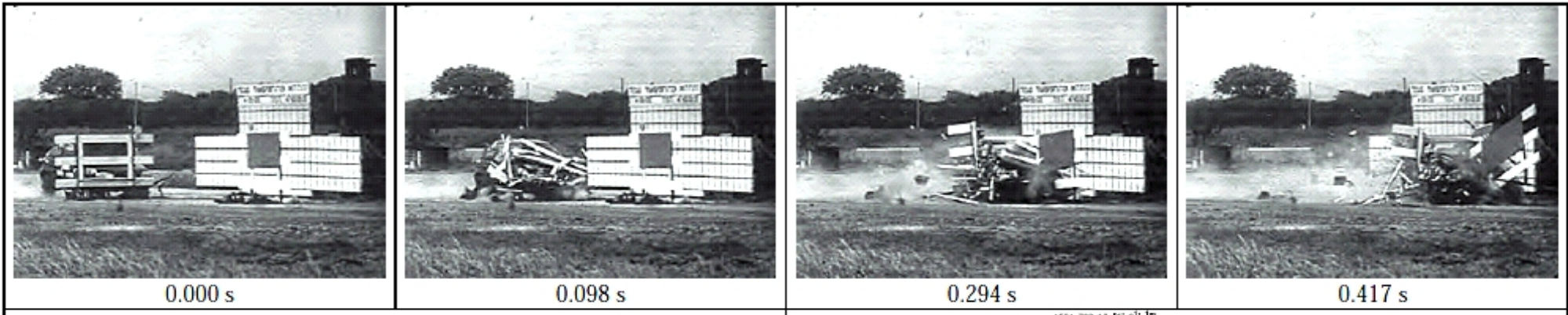


Figure 6.20. Vehicle after Test 3.

# Crashworthy Devices

NCHRP Reports 350 (Safety Performance Evaluation of Highway Features)

NCHRP 553 (Crashworthy Work-Zone Traffic Control Devices)

AASHTO Manual for Assessing Safety Hardware (MASH)

## Cones, Barrels & Delineators

- Lightweight devices (<100 lb)
- Good crash history
- Vendors self-certify
- *If used, lights must be firmly attached to drums.*



## Barricades & Sign Supports

- Subtle design features affect crashworthiness
- Freeways: Level 3 crash test required – 62 mph
- Several generic designs tested to NCHRP 350 criteria
- MASH tests required in future



# Approved Portable Mounting Systems

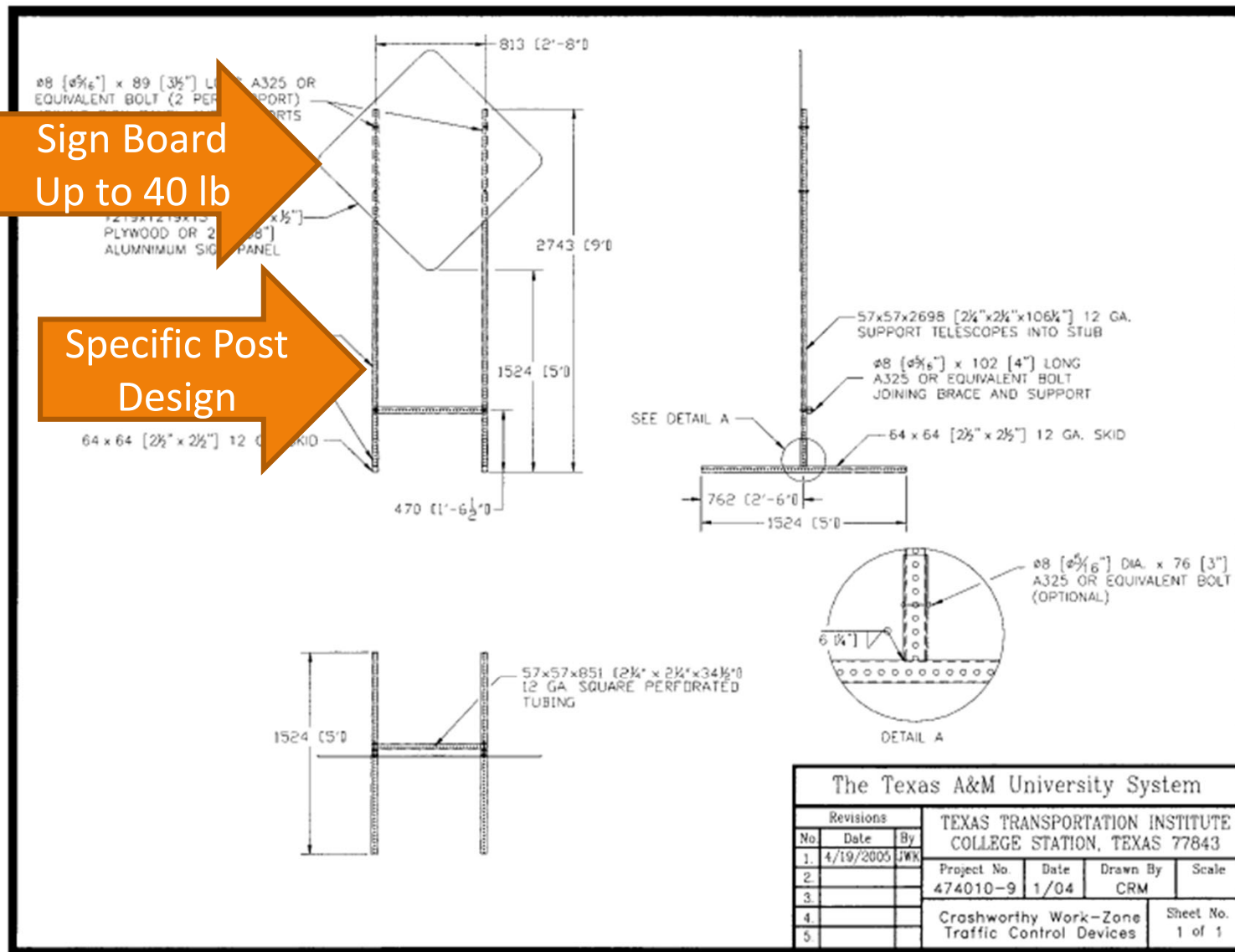


Figure 9.8. Details of the strong dual-upright sign support system with sign panel mounted at a height of 1.5 m (5 ft).

# Crash Testing Necessary to Validate Crashworthy Performance



**90° Test Of Michigan Standard Sign**



**Redesigned with Stiffer Uprights**



# Crashworthy Temporary Sign Supports



<https://www.youtube.com/watch?v=CBb44Kkan8g>

# Untested Devices



Source: Wisconsin DOT

# Where To Find Crashworthy Systems:



FHWA Policy and Guidance Center  
Countermeasures that reduce crash severity

[https://safety.fhwa.dot.gov/roadway\\_dept/countermeasures/reduce\\_crash\\_severity/](https://safety.fhwa.dot.gov/roadway_dept/countermeasures/reduce_crash_severity/)

# Other Devices

## Barriers, Longitudinal Barricades & Crash Cushions

- Extensive crash testing required
- *Proper installation is essential*

## Trailer-Mounted Equipment

- Crash testing currently not required
- Delineate
- Shield where possible
- Remove when not needed



Source: John Shaw

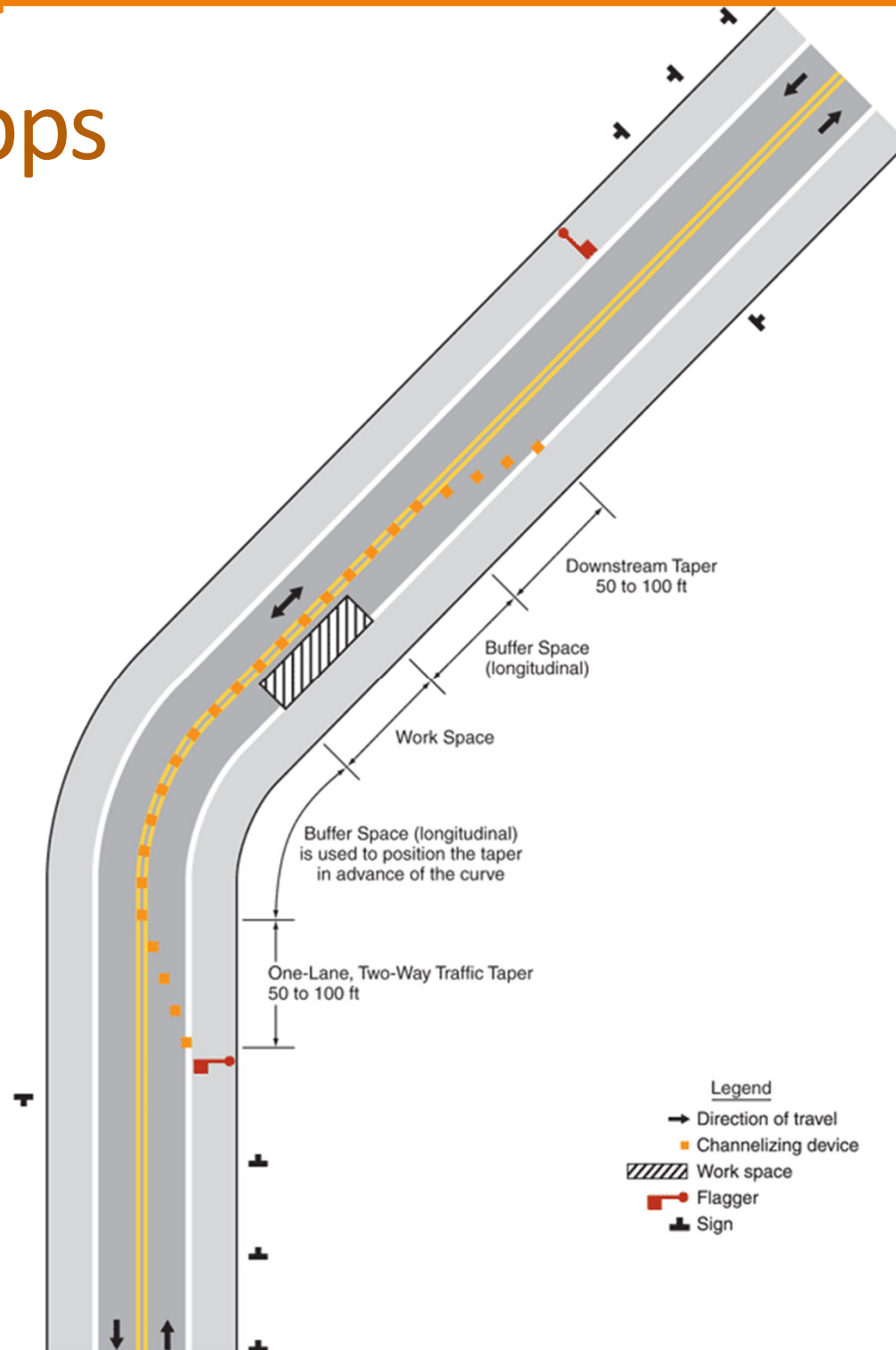
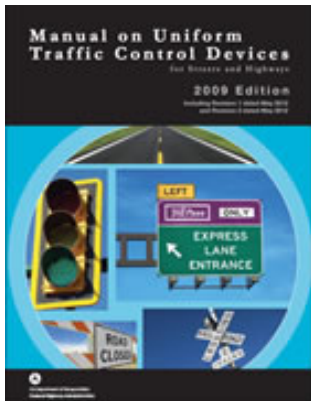
# Agency Standard Detail Drawings (SDDs)

- Mainline closures & detour signing
- Advance warning signs
- Signing for moving operations
- Signing for lane closures with barriers
- Ramp construction staging
- Single lane crossover with barrier
- Two lane closure
- Exit and entrance ramp closure
- Intersection within single lane closure
- Shoulder closure
- Temporary bypass, etc.

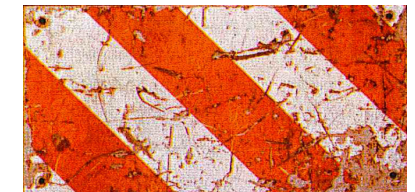
# Common Traffic Management Techniques

- One-Lane, Two-Way Traffic Control
- Lane constriction
- Intermittent closure
- Lane closure
- Two-way operation on one-side of a divided highway
- Using shoulder, or portion of shoulder, as a driving lane(s)
- Construct temporary bypass lane(s)
- Diverting a portion of the traffic
- Full road closure with all traffic diverted

# Typical Apps



# ATSSA TTC Quality Guide



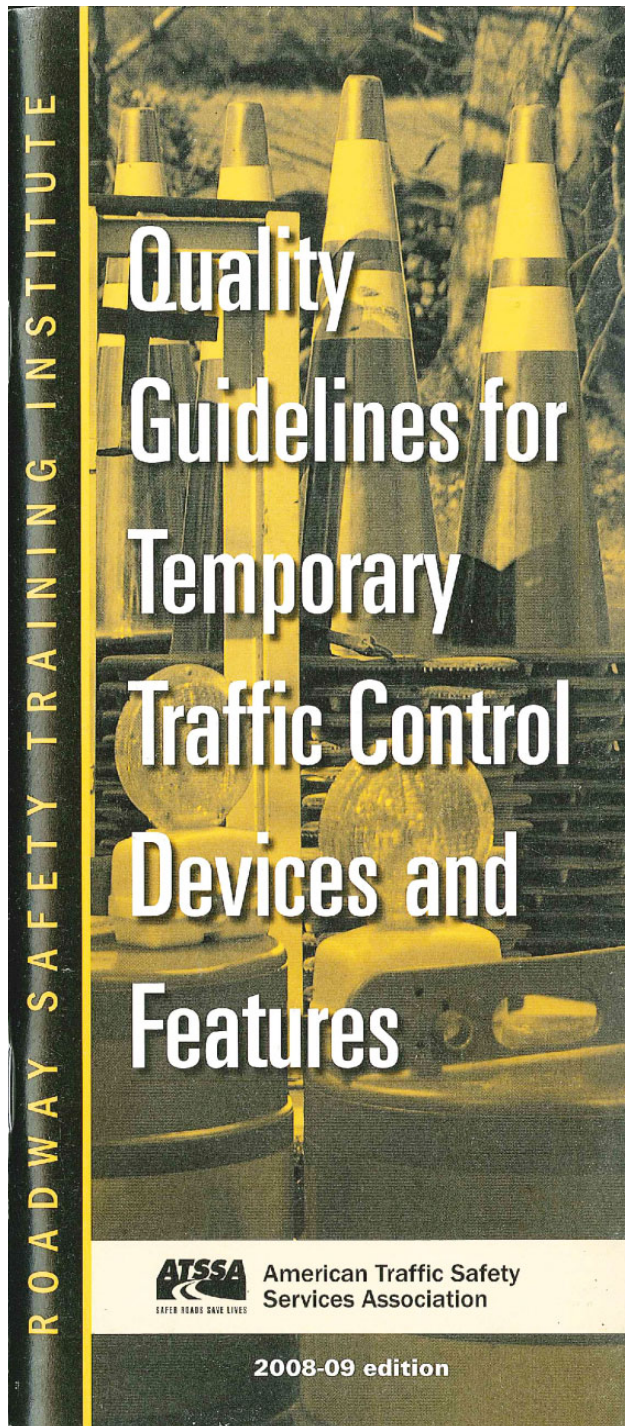
Acceptable



Marginal



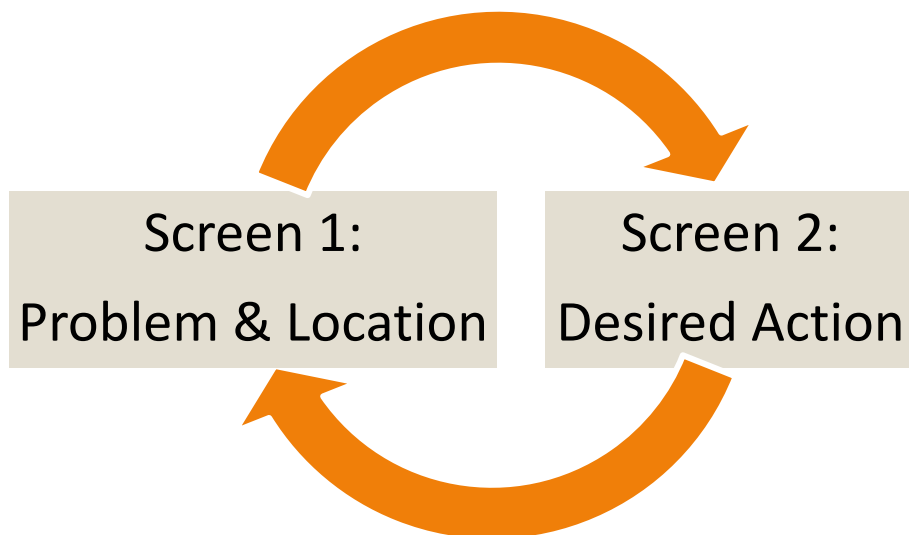
Unacceptable





# PCMS Principles

- Two phases maximum
- Understandable in either order
- Readable at highway speed
- MUTCD-compliant messages and abbreviations





# NCHRP 581:

## Design of Construction Work Zones on High-Speed Highways

Chapter 1: Introduction

Chapter 2: Design Controls and Principles

Chapter 3: Conceptual Design and Planning of Work Zones

Chapter 4: Roadway Design

Chapter 5: Roadside Design and Barrier Placement

Chapter 6: Ancillary Design Information

# NCHRP 581: Content Examples

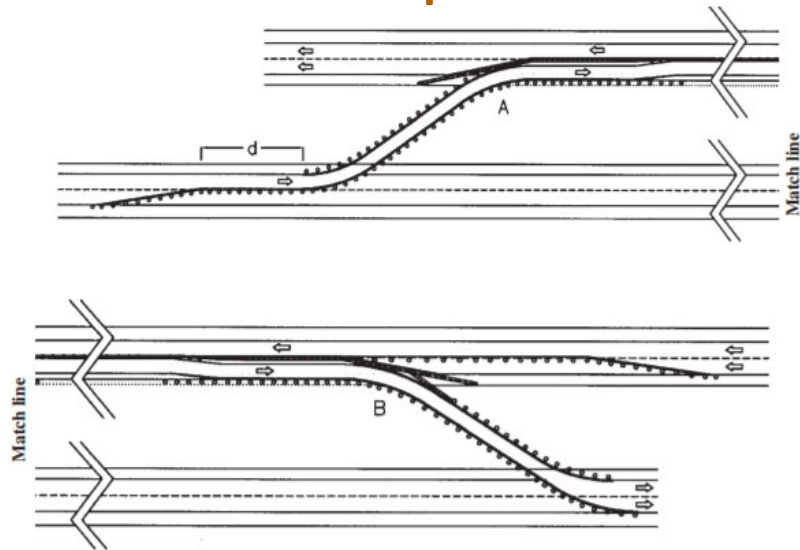


Exhibit 4-7. Example plan view of median crossover.

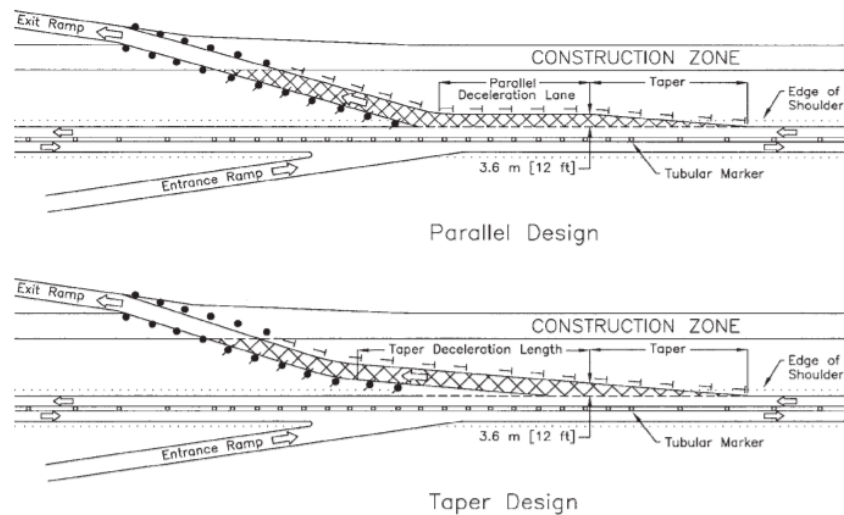


Exhibit 4-15. Temporary interchange exit ramp for a median crossover.

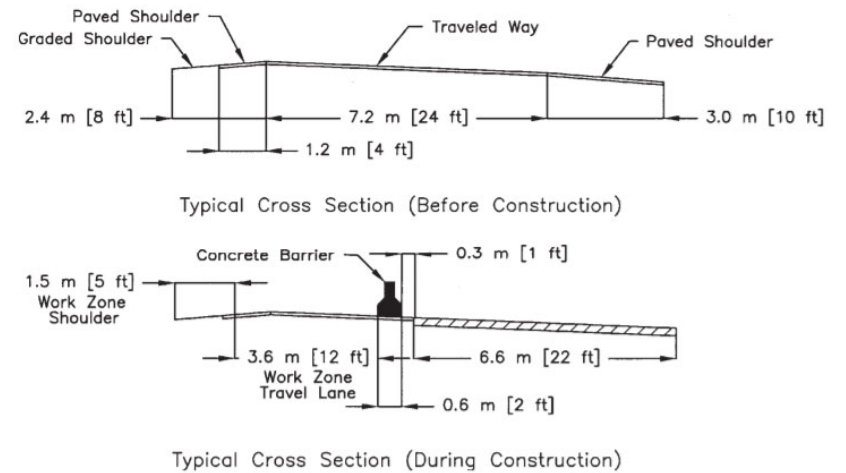


Exhibit 5-3. Cross sections for outside lane and shoulder closure for part-width construction on a four-lane divided highway.

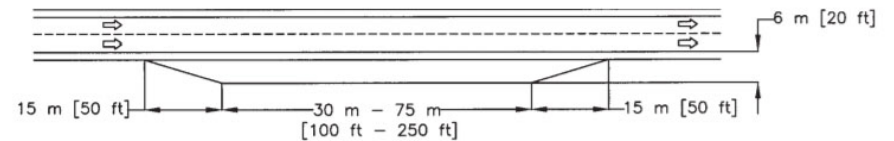
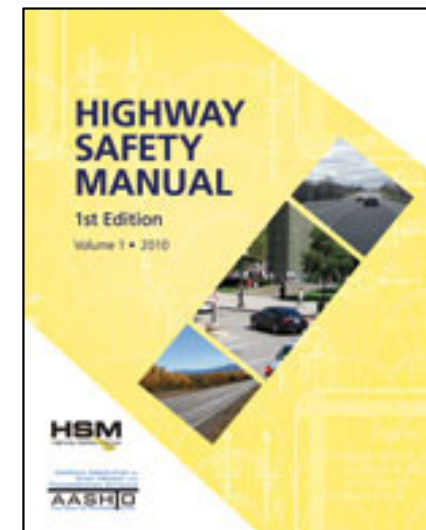
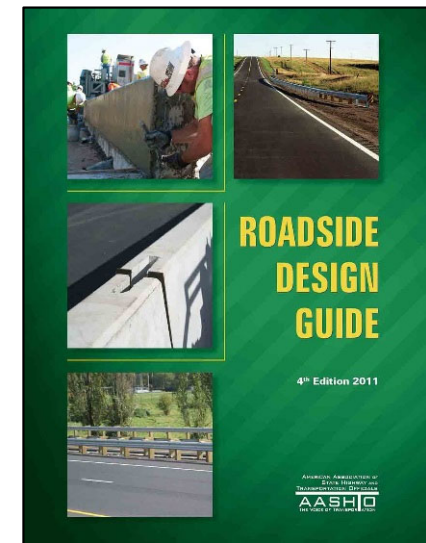


Exhibit 6-3. Example emergency turnout.

# AASHTO Resources

- **AASHTO A Policy on Geometric Design of Highways and Streets (Green Book):**  
Limited guidance on work zones.
- **AASHTO Roadside Design Guide:** Chapter 9 discusses traffic barriers, traffic control devices and other features in work zones.
- **AASHTO Highway Safety Manual:**  
Includes methods for estimating increase in crashes due to construction.



# Fundamental Principles

---

# 1: Know Your Site

Street View and Photolog are useful, but there is still no substitute for spending time at the site:

- 3D geometrics – physical dimensions
- How motorized and non-motorized traffic/users make use of the facility
- Differences between night and day
- Quality of detour/alternate routes – safety, pavement condition, lane widths, grades, degree of curvature, truck route? Require mitigation improvements?
- Interaction with other roadways and infrastructure

“Only through endless walking can the designer absorb into his being the true scale of...spaces.” --Edmund Bacon *Design of Cities*, 1974

## 2: Accommodate All Users at All Times

Plan and design for the safe accommodation of all road users during every stage of construction:

- Pedestrians and bicyclists
- Transit vehicles and riders
- Motor vehicles including motorcycles
- Heavy trucks (including those carrying hazardous materials and oversize/overweight loads that require state issued permits)
- Construction-related traffic
- Incident management vehicles

### Challenges:

- Adequate accommodation for infrequent types of road users
- Stage changes and other transitional periods
- Extended lulls in construction activity
- Adverse weather and lighting conditions
- Access to properties adjacent to the roadway

## 3: Make the Work Zone “Self-Explaining”

- Keep geometrics and roadside design as similar to permanent layouts as site conditions allow
- Provide visual cues that show drivers what speed and maneuvers are appropriate
- Make transitions gradually and delineate them clearly
- Provide clear route guidance
- Avoid over-reliance on signage
- Avoid frequent or abrupt changes in geometrics and number of lanes
- Avoid abrupt increases and decreases in running speeds
- Avoid violating driver expectations

Also see: MUTCD Section 5G.01



## 4: Manage Queueing and Delay

### Know your traffic:

- Get data about how traffic volume varies by season, day of week, and time of day.
- Identify periods with unusually high/low volumes of pedestrians, buses, heavy trucks, etc.
- Evaluate site-specific traffic effects of holidays and events

### Obtain a traffic analysis and use its results to manage traffic impacts:

- Adjust lane closure days/hours to minimize queuing and delay
- Provide queue warning to prevent back-of-queue crashes
- Manage queues by encouraging diversion of excess flow to alternate routes

## 5: Make Sensible Investments in Alternate Routes

- Provide clear alternate route signing and marking
- Resolve localized bottlenecks such as insufficient left turn capacity
- Improve signal timing and progression
  - Fix malfunctioning loop detectors, etc.
  - Install GPS-based controller clocks to maintain tight coordination
- Address issues that disproportionately affect throughput:
  - Illegal parking
  - Loading zones
  - Poorly-positioned bus stops

## 6: Expect the Unexpected

Design-in a contingency plan for:

- Traffic incidents in the work zone
- Occupational injuries on the work site
- Lost/misdirected motorists
- Lost/misdirected materials delivery vehicles
- Construction delays

# 7: Coordinate with Other Agencies & Organizations

Reduce unexpected and unusual situations by coordinating plan preparation with:

- Other highway agencies
- Transit
- Law enforcement & other emergency responders
- Schools
- Utilities
- Railroads

## 8: Include Appropriate Contractual Provisions

- Training requirements for workers and their supervisors
- Routine inspection of traffic control elements
- Inspection and maintenance of roadside safety

## 9: Promote worker and road user safety

- Be alert for site defects and point them out to someone who can resolve them.
- Stay up-to-date on best practices for work zone safety.
- Mentor junior staff about common pitfalls and their solutions.
- Encourage sharing of technical information about work zone design, including both positive and negative examples.
- Encourage constructive dialogue on procedures, policies, standards, and legislation that can improve work zone safety.
- Use project-related public outreach to reinforce work zone safety messages.
- Set a positive example by complying with traffic laws and using safe practices when driving through work zones.

## Class Exercise

- A suburban arterial normally operates at 45 to 50 mph.
- During construction the safe running speed will be about 35 mph.
- What could you do to give the roadway the “feel” of a 35 mph facility?

# Class Exercise

## Situation

- A suburban arterial normally operates at 45 to 50 mph.
- During construction the safe running speed will be about 35 mph.
- What could you do to give the roadway the “feel” of a 35 mph facility?

## Potential Tactics

- Install advisory 35 mph speed signs.
- Space the channelizing devices closely.
- Use temporary pavement marking or a double row of channelizing devices to narrow the lanes and provide a wider lateral buffer for worker protection.
- Install temporary fencing along the outside curbline to make the road space look narrower to drivers and keep pedestrians out of the work zone.
- Create temporary pedestrian refuges to allow two-stage crossings and emphasize ped/bike safety.
- Require construction vehicles, contractor vehicles, and agency vehicles to observe a 35 mph maximum speed.
- Time the traffic signals for 35 mph progression and provide signage indicating that this is the case.



# Traffic Management Exposure Control Measures

Exposure control can be accomplished by diverting some or all traffic away from the work site, reducing the duration to complete the project, or altering the time when work is conducted.

- Off Peak or Night Work Zone Operations
- Contracting Strategies to Expedite Completion
- Innovative Construction Techniques to Expedite Completion

# Off Peak or Night Work Zone Operations



Source: Pavementinteractive.org

# Construction Techniques to Expedite Completion

## Slide-In Bridge Construction



Source: FHWA

# Construction Techniques to Expedite Completion

## Precast Concrete Panel Pavement Systems



Source: FHWA

# Frequent Design Problems

---

# Sign Clutter



Photo: [Transport Research Laboratory](#)

British Example

- Overuse of traffic signs can dilute important messages and cause information overload.
- Even without construction, many locations are cluttered with traffic signs and advertising.
- Adding work zone signs can worsen clutter, especially if all permanent signs remain in place.
- *Is there enough time to read and mentally process all signs at normal driving speed?*
- *Are some signs hidden by others?*

# Sign Clutter Reduction



High Priority



Low Priority

- Determine and prioritize all permanent and temporary messages
  1. Regulations and essential safety messages
  2. Major routing decisions
  3. Informational / “nice to have”
- Evaluate sign spacing and legibility
- Purge illegal advertising signs
- Remove or cover unnecessary signs
- Position pedestrian, bike, and transit signs where they are less likely to distract motorists
- Where possible, simplify wording and graphic design of signs

# Pavement Edge Drops



Source: Wisconsin DOT

- Edge drop hazards → rollover crash risk
- Verify grade differences during plans development
- Mitigation methods:
  - Temporary barriers
  - Temporary backfill
  - Adjust/revise grades
  - Change construction sequence
  - Limit traffic to low speed

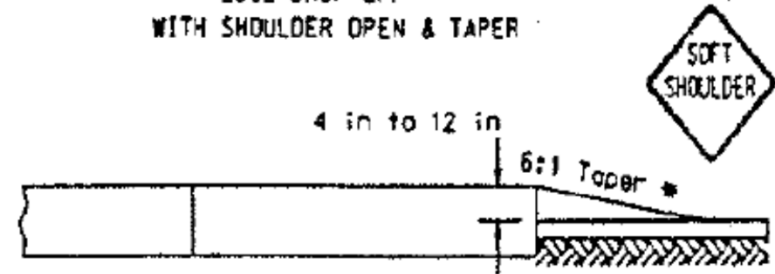


## UNEVEN LANES - WITH LANE CLOSED &amp; TAPER



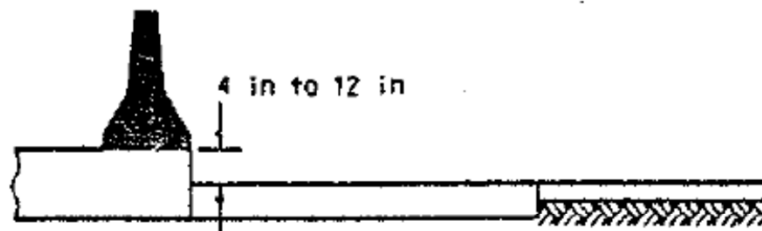
The adjacent lane shall be closed with the appropriate lane closure.

## EDGE DROP OFF - WITH SHOULDER OPEN &amp; TAPER



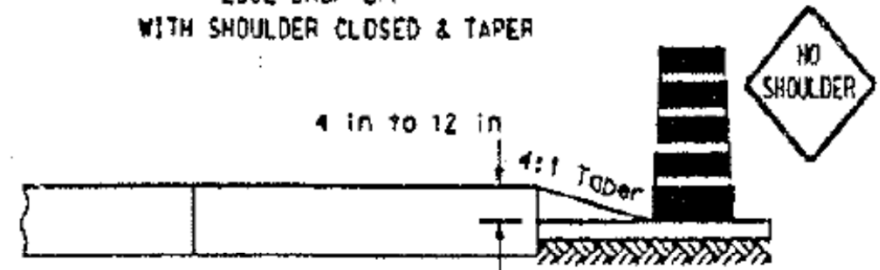
The 4:1 taper shall be compacted  
See the conditions of use from text description.

## UNEVEN LANES - WITH LANE CLOSED &amp; NO TAPER



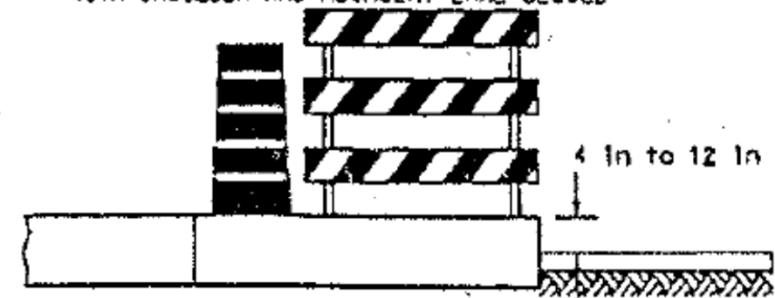
The adjacent lane shall be closed with the appropriate lane closure.

## EDGE DROP OFF - WITH SHOULDER CLOSED &amp; TAPER



The shoulder shall be closed with the appropriate signs and channelizing devices at a maximum 100 ft spacing.

## EDGE DROP OFF - WITH SHOULDER AND ADJACENT LANE CLOSED



The adjacent lane shall be closed with the appropriate lane closure.

Figure 25. North Dakota's Longitudinal Edge Drop-Off Guidelines

# Constructability

---

# What is Constructability?

Constructability is a pre-construction process exploring:

- Extent to which a design facilitates **ease of construction**, subject to the overall requirements for the completed project.
- A system for **integration of construction knowledge and experience** in planning, engineering, procurement, and field operations in the building process.
- **A process for balancing various project and environmental constraints** to maximize achievement of project goals.

Constructability includes:

- Review of completeness and adequacy of project documentation.
- Analysis of buildability, scheduling, logical sequencing, and complexity of project elements.



Construction of the Eiffel Tower, May 1888

# Consequences of Poor Constructability

Constructability issues can result in:

- Traffic delays
- Construction delays
- Change orders / cost overruns
- Disputes
- Public/political dissatisfaction with project delivery
- Claims that the PS&E package was inadequate

# Common Constructability Issues

- Conflicting work operations requiring the same physical space.
- Work operations and traffic management requiring the same space.
- Inability to get materials in/out of a work area efficiently.
- Inability to use areas (for construction or for traffic) because work elsewhere is not completed.
- *They are often made worse when there are two or more contracts, contractors, or agencies doing work in the same area.*

# Constructability Tools

- Clear project objectives
- Independent plan reviews
- 3D renderings of each project stage



Construction of the Eiffel Tower, December 1888

# Class Discussion

- What are some constructability issues you have encountered in your previous projects?
- What were the mobility and safety impacts?
- How did you communicate the problem to others in your organization?
- How did you resolve the problem?
- What steps are being taken to avoid similar problems in the future?

# Staging Alternatives

---

A Small Group Exercise



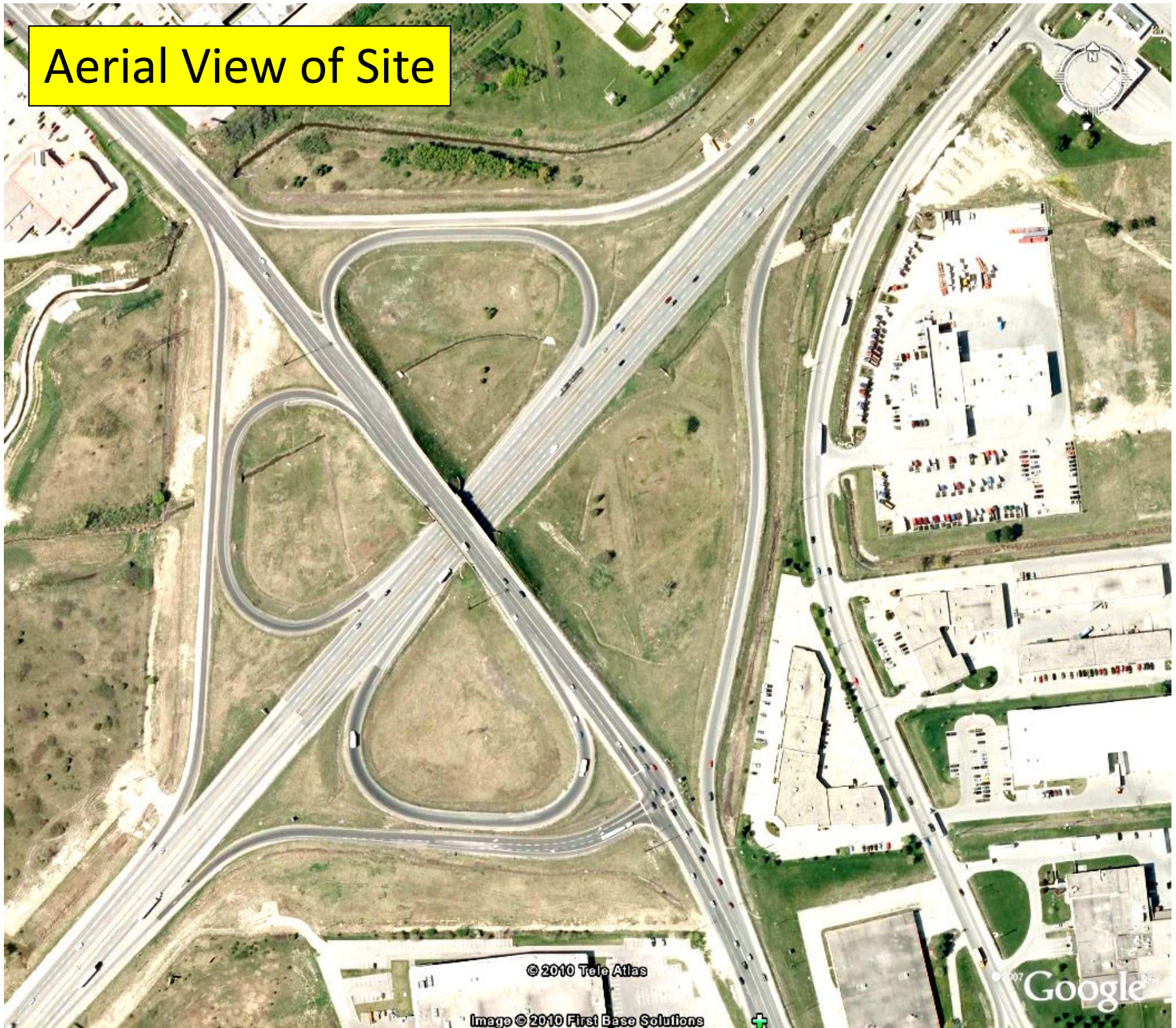
# Re-Decking Wellington Rd Bridge



# Re-Decking Wellington Rd Bridge



# Aerial View of Site



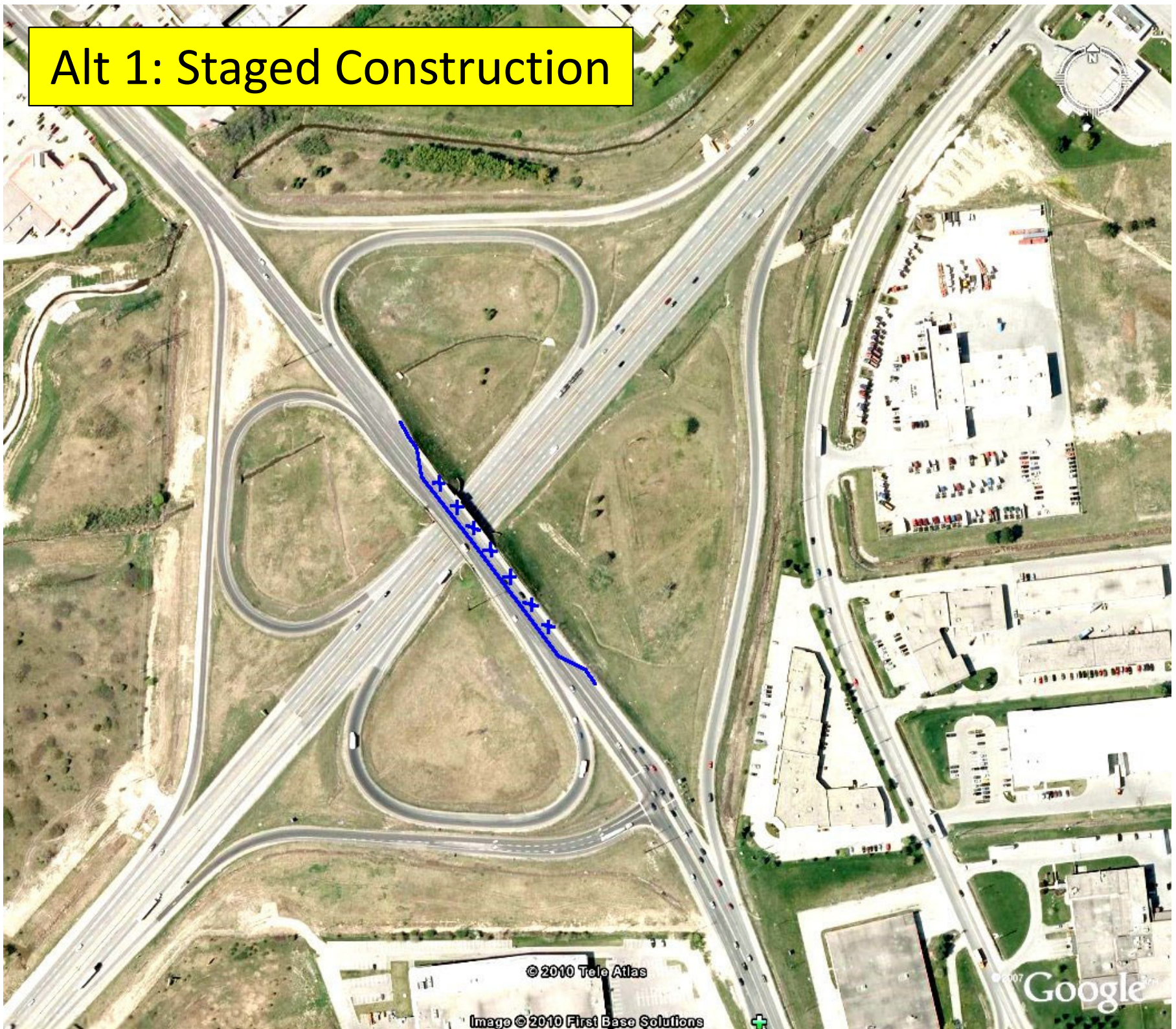
© 2010 Tele Atlas

Image © 2010 First Base Solutions



Google

# Alt 1: Staged Construction



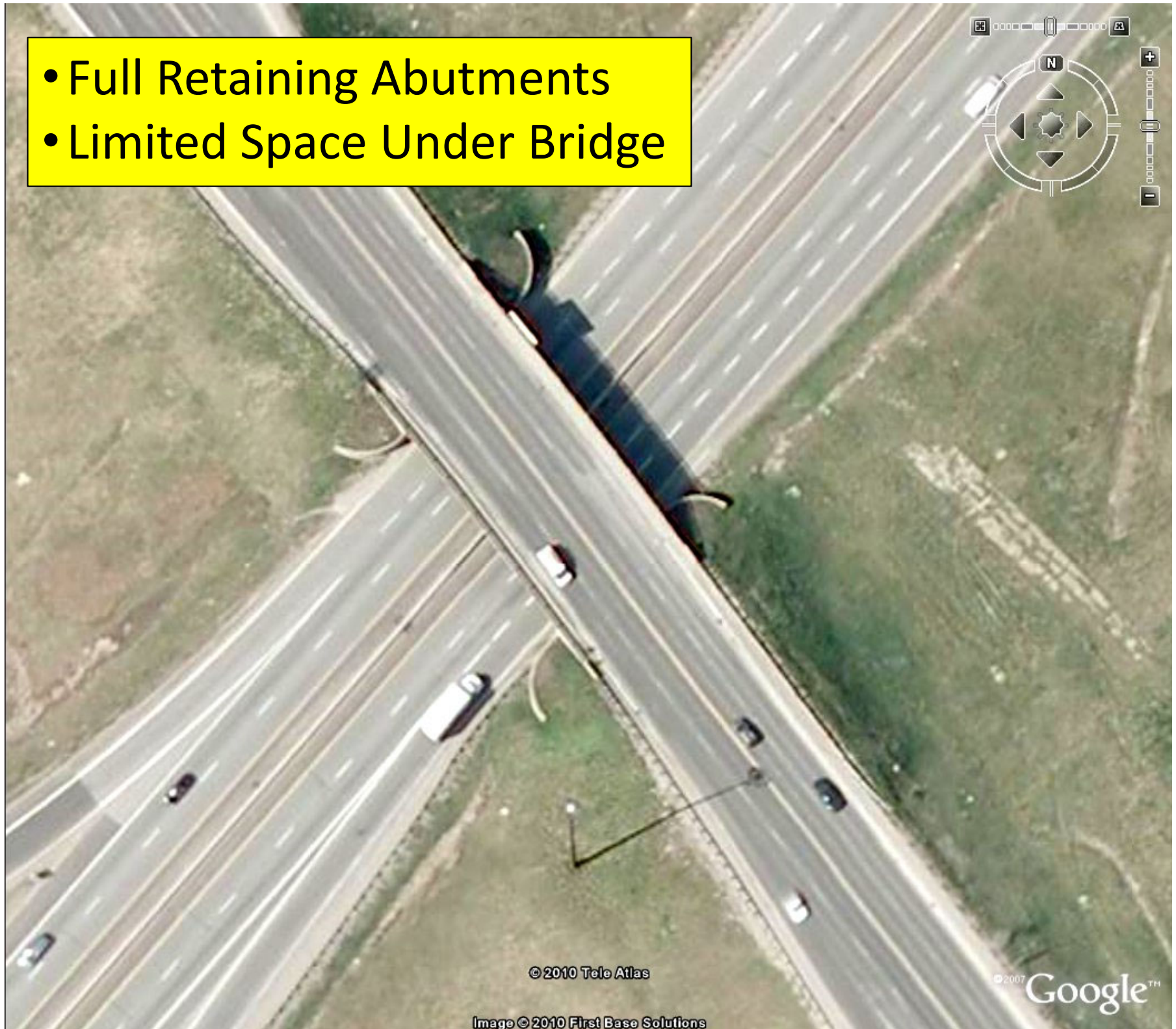
© 2010 Tele Atlas

Image © 2010 First Base Solutions



Google

- Full Retaining Abutments
- Limited Space Under Bridge



© 2010 Tele Atlas

© 2007 Google™

Image © 2010 First Base Solutions

## Staging Considerations:

- Demolition Debris
- Work Duration

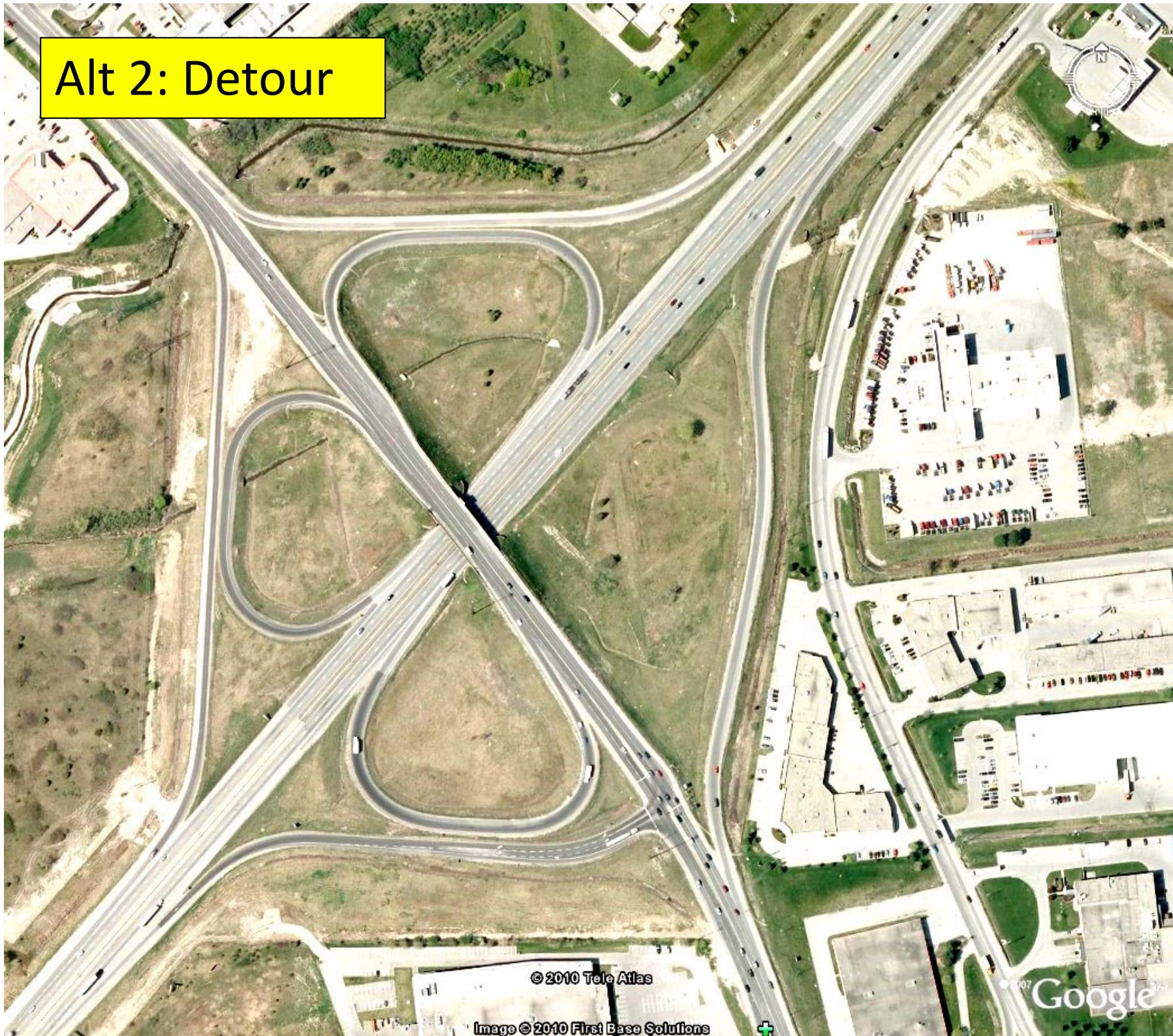


© 2010 Tele Atlas

© 2007 Google™

Image © 2010 First Base Solutions

# Alt 2: Detour



© 2010 Tele Atlas

Image © 2010 First Base Solutions

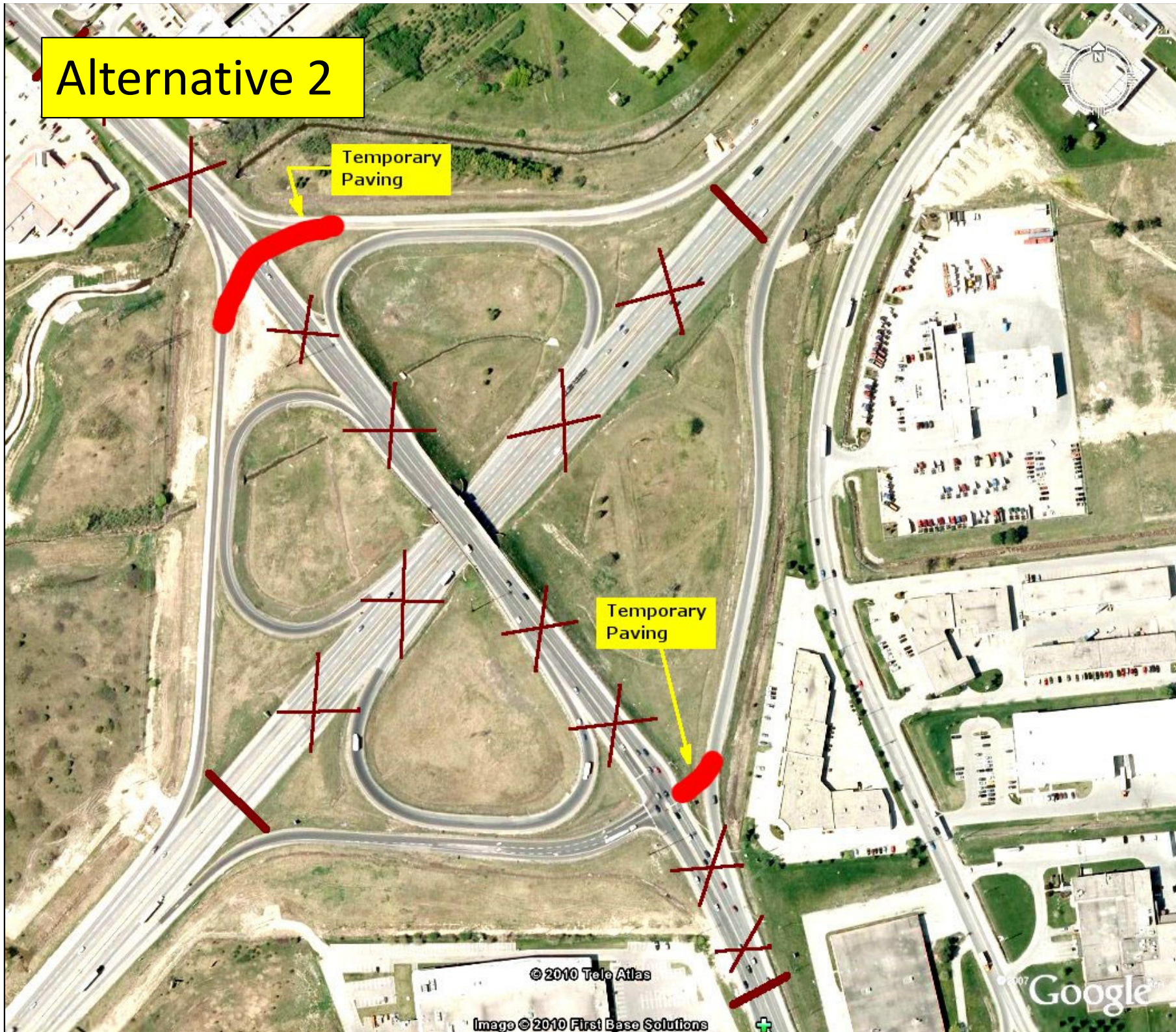


Google

# Alternative 2

Temporary Paving

Temporary Paving

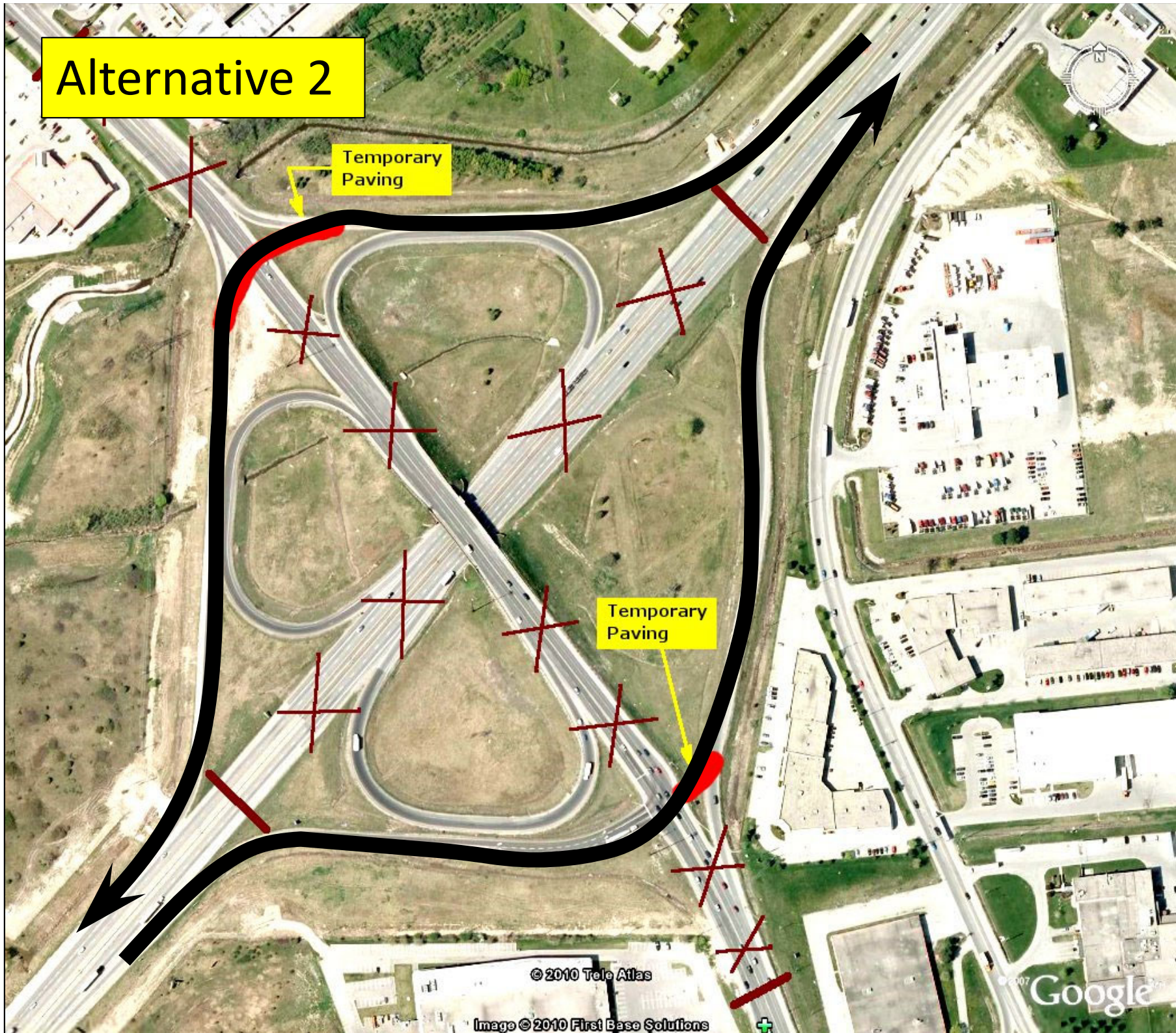




# Alternative 2

Temporary Paving

Temporary Paving



# Alternative 2



© 2010 Tele Atlas

Image © 2010 First Base Solutions

© 2007 Google™

# Alternative 2



© 2010 Tele Atlas

Image © 2010 First Base Solutions

© 2007 Google™

# Alternative 2

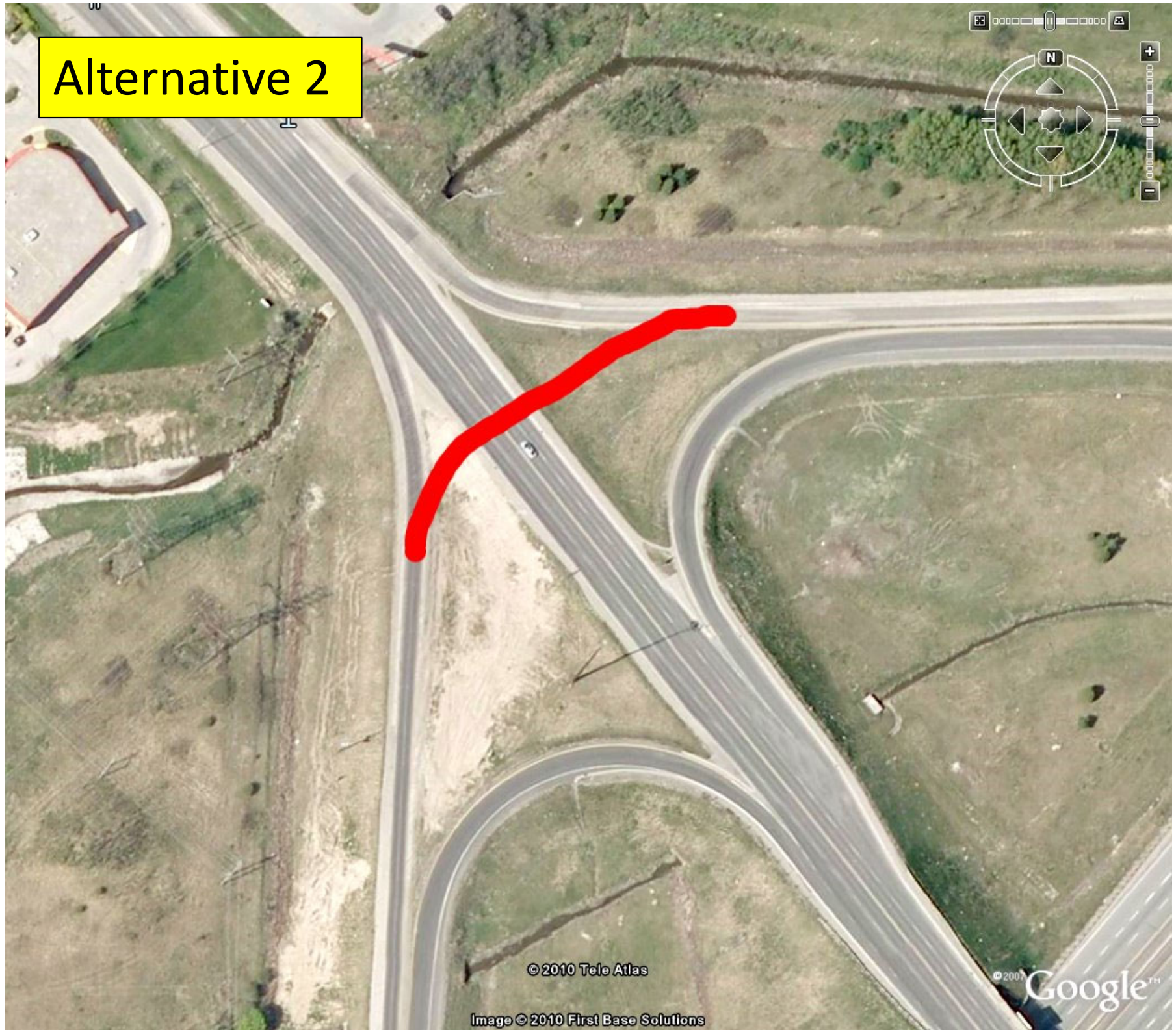
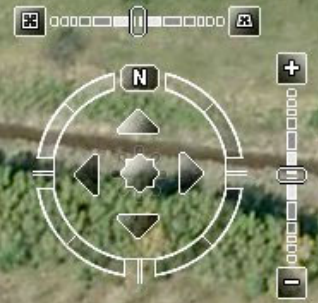


© 2010 Tele Atlas

© 2007 Google™

Image © 2010 First Base Solutions

# Alternative 2



© 2010 Tele Atlas

Image © 2010 First Base Solutions

© 2007 Google™

# Alternative 2



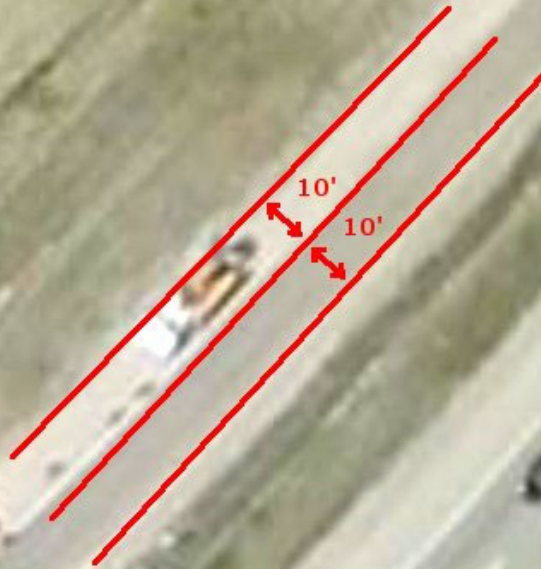
© 2010 Tele Atlas

Image © 2010 First Base Solutions

© 2007 Google™



# Alternative 2



# Alternative 2: Wellington Rd Detour





# Traffic Volumes

Westbound  
20,000 AADT  
1500 PHV

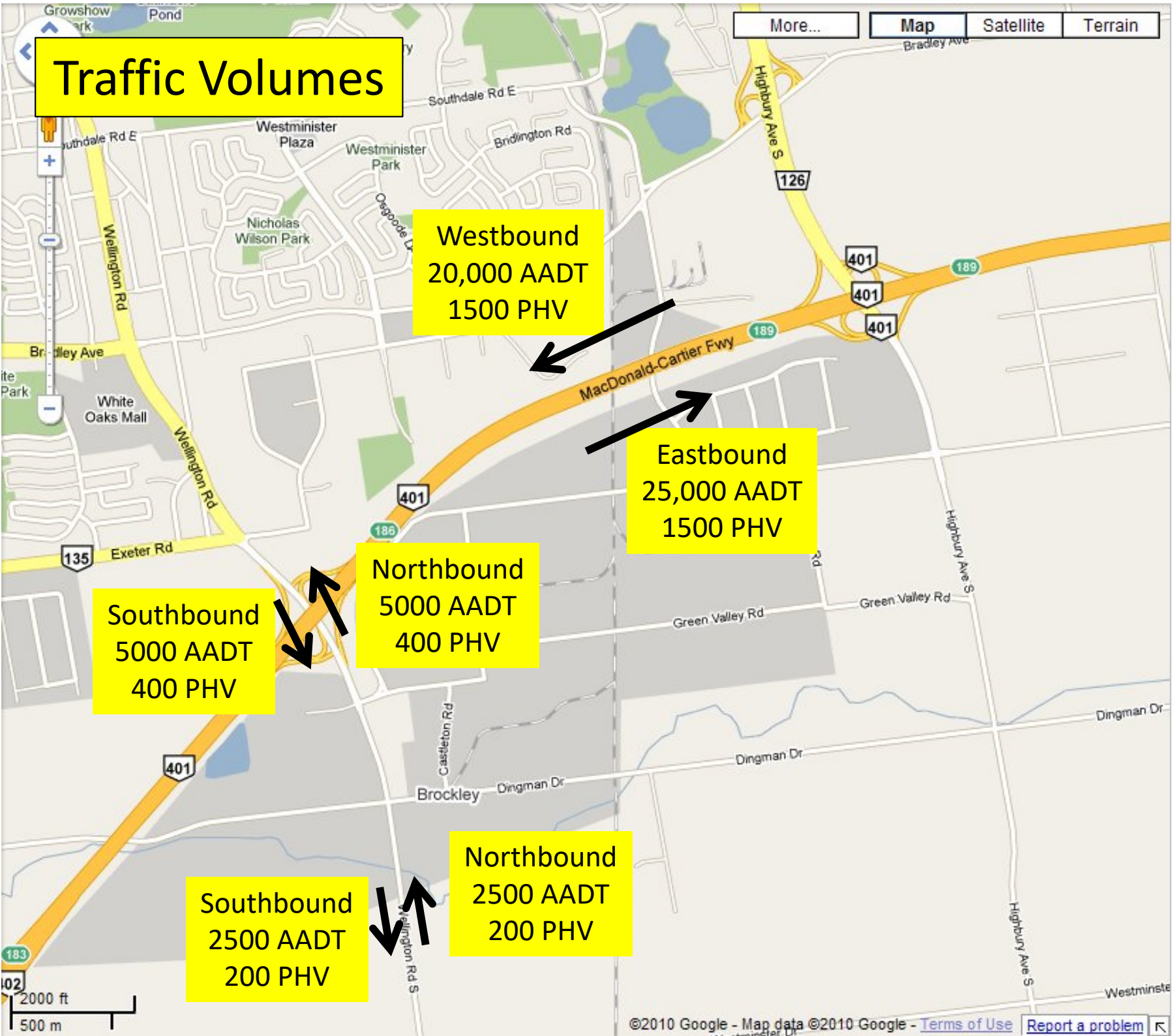
Eastbound  
25,000 AADT  
1500 PHV

Southbound  
5000 AADT  
400 PHV

Northbound  
5000 AADT  
400 PHV

Southbound  
2500 AADT  
200 PHV

Northbound  
2500 AADT  
200 PHV



# Polling Question

