



Transportation Systems Management and Operation
Traffic Infrastructure Process (TSMO – TIP)

FY24 Statewide Needs Inventory Report

This is a list of the highest ITS need areas in each region, utilizing the TSMO-TIP needs analysis tool which uses Meta-Manager June 2024 data. A need does not equate to a specific ITS deployment or necessarily an ITS deployment at all. For instance, an area may continue to indicate a need even though it already has many ITS deployments. This report is a high-level snapshot that regions should use as a starting point to determine which areas to focus on and to determine if an ITS solution might be appropriate. It should be noted that these areas are flagged by the needs tool based on their relative weight to other facilities across the state. A flagged segment does not necessarily equate to a deficient segment.

A number of factors went into the regional priority segment lists. The rankings are primarily based upon regional comparisons of weighted averages of the six presets listed below. Additional weight is given to lengthy segments where high needs were reported on many segments within the identified corridor/extent. The priority of the areas listed below is not an exact science, so strict adherence to the order may not be appropriate.

Regional needs maps (and detailed city insets) are also included with this report. These maps should be used to look at the top needs segments as well as other areas across each region. It is encouraged to look at the needs across the entire region, not just the tops needs segments listed below. Once a need area is identified, engineering judgment including additional data analysis should be used to identify possible ITS solutions. The needs analysis tool and the benefits tool can be used to delve into an area of interest and look at the benefits of a particular ITS deployment strategy.

Northwest Region

	Route	Corridor	Municipal Extent	County	DT	Sa	MP	MF	Se	FP
1	I-94	MN Border to Exit 41	Hudson to Eau Claire	Saint Croix/Dunn	0.39	0.35	1.21	0.98	0.76	1.25
2	I-535	US 53 to MN Border	Superior	Douglas	0.71	0.84	0.91	0.97	1.07	0.35
3	US-53	CTH AA to WI 29	Eau Claire to Lake Hallie	Eau Claire/Chippewa	0.69	0.70	0.90	0.95	1.10	0.25
4	I-94	WIS 121 to County O	Northfield to Millston	Jackson	0.22	0.15	1.13	0.98	0.54	1.46
5	I-94	US 12 to US 53	Eau Claire	Eau Claire	0.37	0.57	1.04	0.82	0.30	1.37
6	US-12	I-94 to County UU	Hudson	Saint Croix	0.64	0.69	0.75	0.73	0.95	0.66
7	US-8	WIS 35 to WIS 65	St. Croix Falls	Polk	0.44	0.38	0.86	0.51	0.87	1.35
8	WIS 35	WI 29 to WIS 65	River Falls	Saint Croix	0.62	-0.08	0.86	0.81	1.82	0.14
9	I-94	US 53 to WIS 121	Eau Claire to Northfield	Eau Claire/Jackson	0.25	0.32	1.00	0.83	0.30	1.31
10	WIS 29	US 53 to WIS 178	Chippewa Falls	Chippewa	0.45	0.56	0.81	0.97	0.40	0.80

Presets:
DT = Default TIP
Sa = Safety
MP = Mobility Present
MF = Mobility Future
Se = Service
FP = Freight Performance

North Central Region

	Route	Corridor	Municipal Extent	County	DT	Sa	MP	MF	Se	FP
1	US-51	WIS 70 to Lakeshore Dr	Minocqua	Oneida	1.02	0.17	0.81	1.19	1.82	0.27
2	WIS 29	US 51 to North Grand Ave	Wausau	Marathon	0.76	0.72	1.02	1.03	1.10	0.52
3	US-51	County D to County K	Hazelhurst to Heafford Junction	Oneida	0.52	0.02	0.76	1.01	1.24	0.92
4	US-51	W. Bridge St to Bus US 51	Wausau to Evergreen	Marathon	0.62	0.66	0.95	0.80	0.88	0.42
5	US 45	County D to County N	New London	Waupaca	0.59	0.59	0.60	0.67	0.98	0.74
6	US-45	WIS 47 to County G	Antigo	Langlade	0.46	0.19	0.67	0.87	1.00	0.87
7	US-8	US-51 to Crescent Rd	Heafford Junction to Woodboro	Oneida	0.35	-0.25	0.78	0.86	1.04	1.04
8	US-8	County P to County G	Rhineland	Oneida	0.43	-0.02	0.76	1.01	0.73	0.91
9	US-10	I-39 to Brilowski Road	Stevens Point	Portage	0.46	0.81	0.77	0.71	0.55	0.53
10	US-10	County F to WIS 49/110	Weyauwega to Fremont	Waupaca	0.27	0.46	0.79	0.82	0.17	1.02

Northeast Region

	Route	Corridor	Municipal Extent	County	DT	Sa	MP	MF	Se	FP
1	WIS 76	Oakridge Rd to County BB	Neenah	Winnebago	0.81	0.28	1.02	1.18	1.64	0.83
2	WIS 441	County CE to County OO	Appleton	Outagamie	0.89	1.00	1.03	0.90	1.36	0.22
3	I-41	Exit 134 to Exit 154	Fox Crossing to Wrightstown	Outagamie/Winnebago	0.77	0.51	1.18	0.99	1.41	0.50
4	I-43	Atkinson Dr to N Webster Ave	Greenbay	Brown	0.89	1.05	0.98	0.96	1.02	0.44
5	US-45	WIS 15 to WIS 54	New London	Outagamie	0.75	0.58	0.82	0.90	1.38	0.77
6	US-141	County P to County X	Beaver to Middle Inlet	Marinette	0.67	0.48	0.78	0.98	1.20	1.04
7	I-41	Exit 151 to Exit 164	Wrightstown to Green Bay	Brown	0.76	0.45	1.11	1.03	1.28	0.48
8	WIS 172	I-41 to I-43	Ashwaubenon to Bellevue	Brown	0.84	0.69	1.12	0.73	1.33	0.34
9	I-41	US-151 to WIS 44	Fond du Lac to Oshkosh	Fond du Lac/Winnebago	0.56	0.59	1.12	0.92	0.87	0.89
10	WIS 26	US 151 to I-41	Waupun to Nekimi	Fond du Lac/Winnebago	0.40	0.07	1.02	0.81	0.92	1.57

Southeast Region

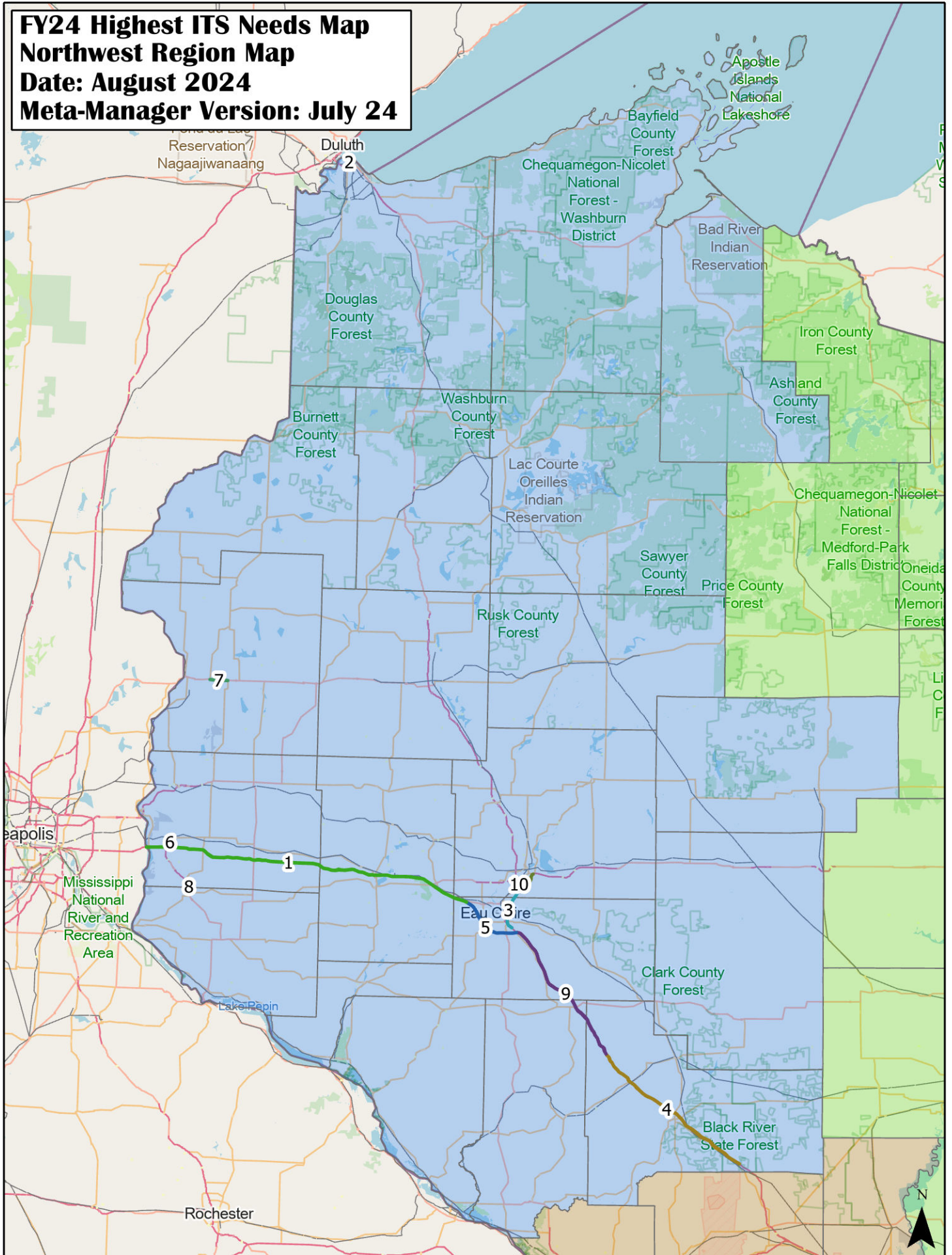
	Route	Corridor	Municipal Extent	County	DT	Sa	MP	MF	Se	FP
1	I-43/41/894	Exit 4 (Hale IC) to Exit 10 (Mitchell IC)	Greenfield to Milwaukee	Milwaukee	1.48	1.04	1.80	1.50	2.22	1.23
2	I-94	Exit 316 (Mitchell IC) to Exit 321	Milwaukee to Oak Creek	Milwaukee	1.37	0.87	1.70	1.54	2.07	1.21
3	I-43	Exit 72 (Marquette IC) to Exit 83	Milwaukee to River Hills	Milwaukee	1.45	1.06	1.78	1.09	2.39	0.94
4	I-41/894	Exit 39 (Zoo IC) to Exit 4 (Hale IC)	Wauwatosa to Greenfield	Milwaukee	1.34	1.08	1.66	1.24	1.91	1.06
5	I-94	Exit 297 to Exit 301B	Brookfield	Waukesha	1.38	1.15	1.67	1.11	2.24	0.71
6	I-94	Exit 287 to Exit 290	Delafield	Waukesha	1.18	0.83	1.61	1.37	2.01	0.96
7	I-94	Exit 304 (Zoo IC) to Exit 310 (Marquette IC)	Milwaukee	Milwaukee	1.55	1.19	1.56	0.90	2.59	0.09
8	WIS 190	WIS 175 to N Holton St	Milwaukee	Milwaukee	1.54	1.46	1.10	1.02	2.18	0.17
9	I-41	Exit 39 (Zoo IC) to Exit 48	Milwaukee	Milwaukee	1.09	0.43	1.73	1.09	2.05	1.05
10	I-43/94	Exit 310 (Marquette IC) to Exit 316 (Mitchell IC)	Milwaukee	Milwaukee	1.26	1.12	1.44	0.72	1.82	0.50

Presets:
DT = Default TIP
Sa = Safety
MP = Mobility Present
MF = Mobility Future
Se = Service
FP = Freight Performance

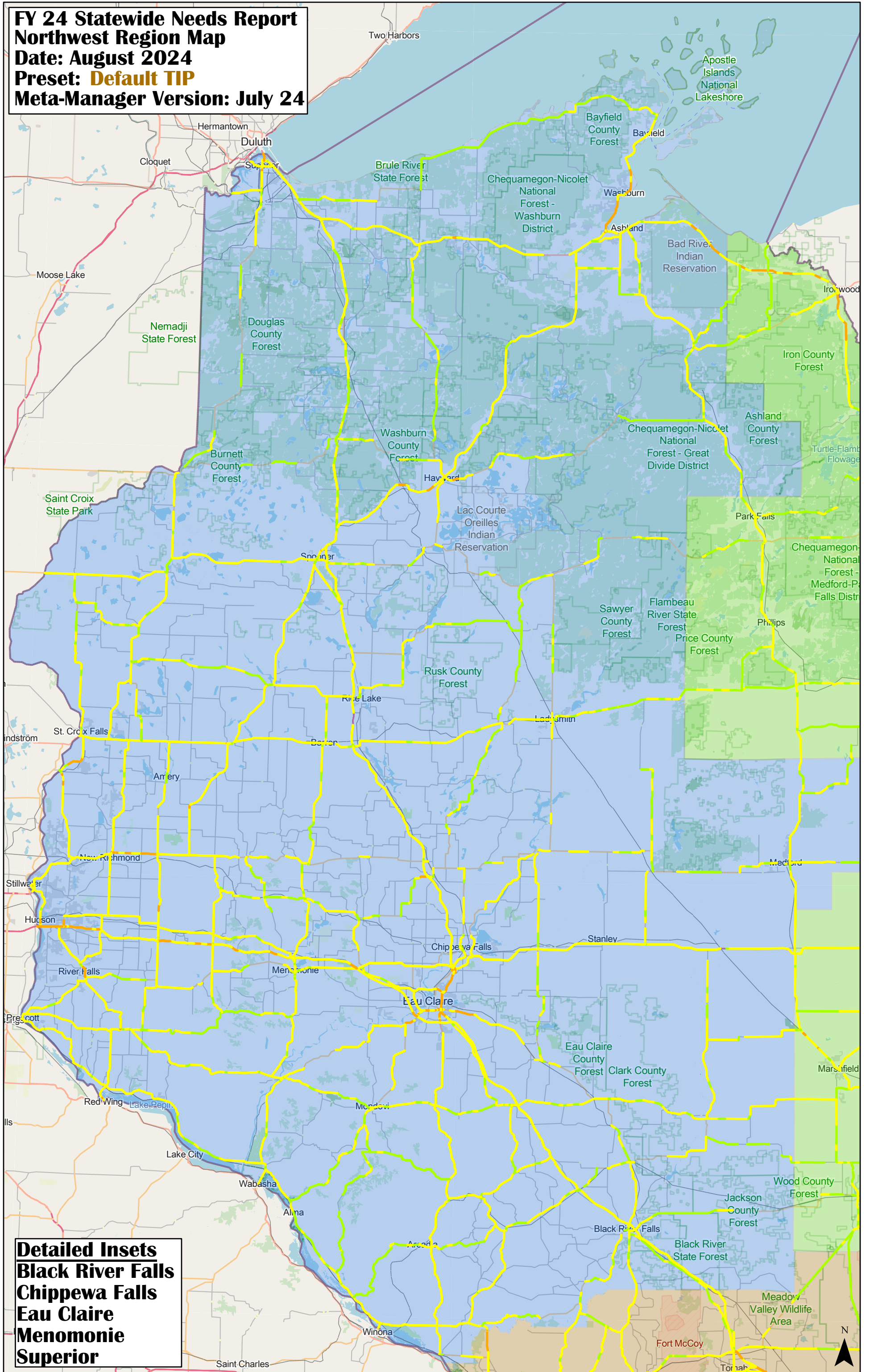
Southwest Region

	Route	Corridor	Municipal Extent	County	DT	Sa	MP	MF	Se	FP
1	US-12 (Beltline)	Exit 258 to Exit 267	Madison	Dane	1.54	1.13	1.82	1.41	2.68	0.88
2	I-39/90	Exit 138 to Exit 142	Madison	Dane	1.05	0.81	1.56	1.31	1.50	1.23
3	I-39/90	Exit 119 to Exit 138	Lodi to Madison	Columbia/Dane	0.97	0.64	1.44	1.36	1.42	1.31
4	I-90/94	Exit 92 to Exit 108	Wisconsin Dells to Portage	Sauk/Columbia	0.77	0.43	1.51	1.29	1.46	1.56
5	I-90/94	Exit 69 to Exit 92	Mauston to Wisconsin Dells	Juneau/Sauk	0.75	0.50	1.51	1.25	1.30	1.63
6	I-90/94	Exit 45 to Exit 69	Tomah to Mauston	Monroe/Juneau	0.64	0.44	1.49	1.28	1.19	1.69
7	US-14	County A to WIS 138	Oregon	Dane	1.02	0.51	1.06	1.34	1.88	0.88
8	US-12 (Beltline)	Exit 252 to Exit 258	Madison	Dane	1.19	0.67	1.22	1.17	2.40	-0.08
9	I-39/90	Exit 108 to Exit 119	Portage to Lodi	Columbia	0.77	0.74	1.29	1.08	1.15	1.20
10	WIS 82	I-94 to 19th Ave	Mauston	Juneau	0.34	-1.07	1.58	1.38	1.56	1.84

FY24 Highest ITS Needs Map
Northwest Region Map
Date: August 2024
Meta-Manager Version: July 24

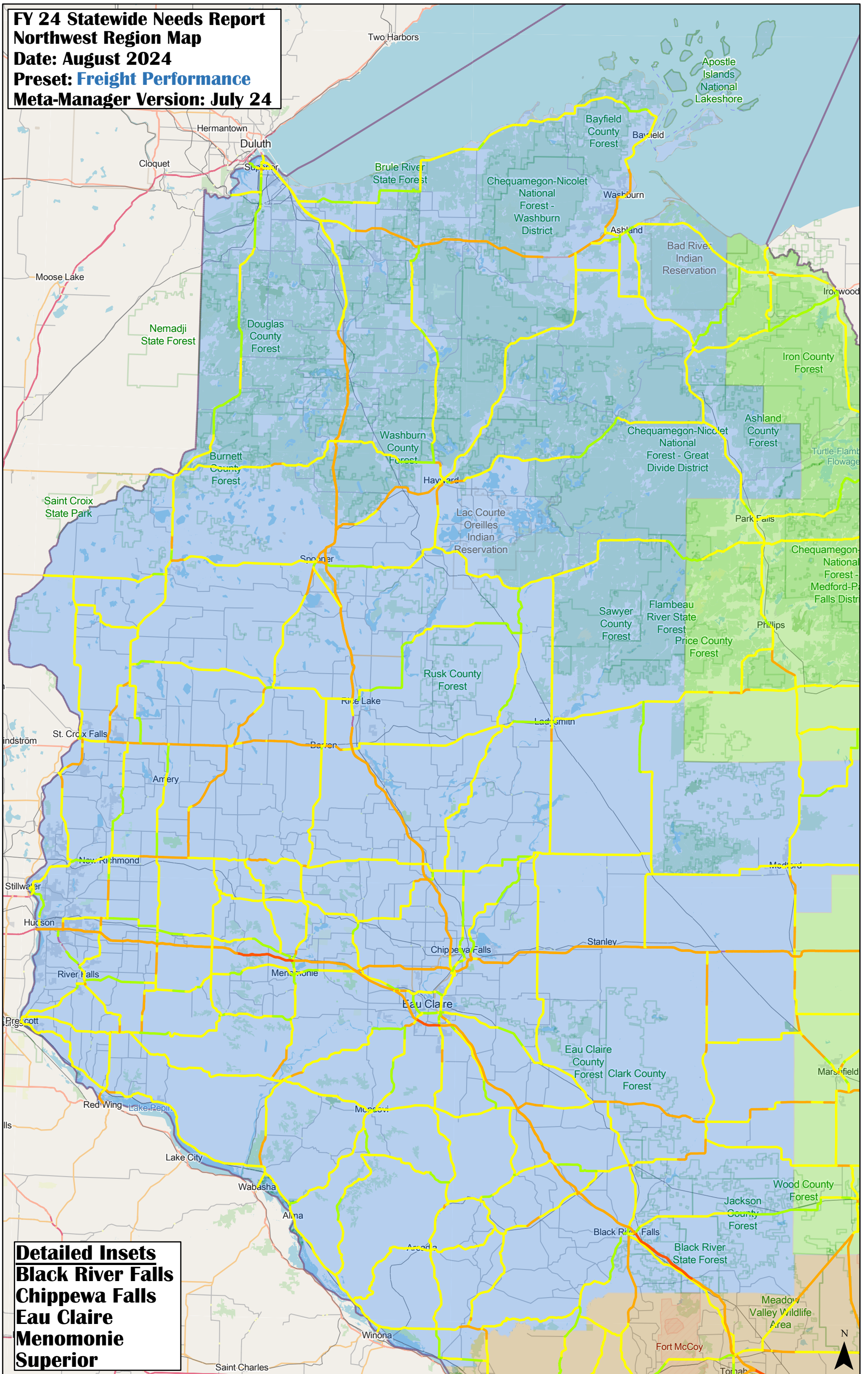


FY 24 Statewide Needs Report
Northwest Region Map
Date: August 2024
Preset: Default TIP
Meta-Manager Version: July 24

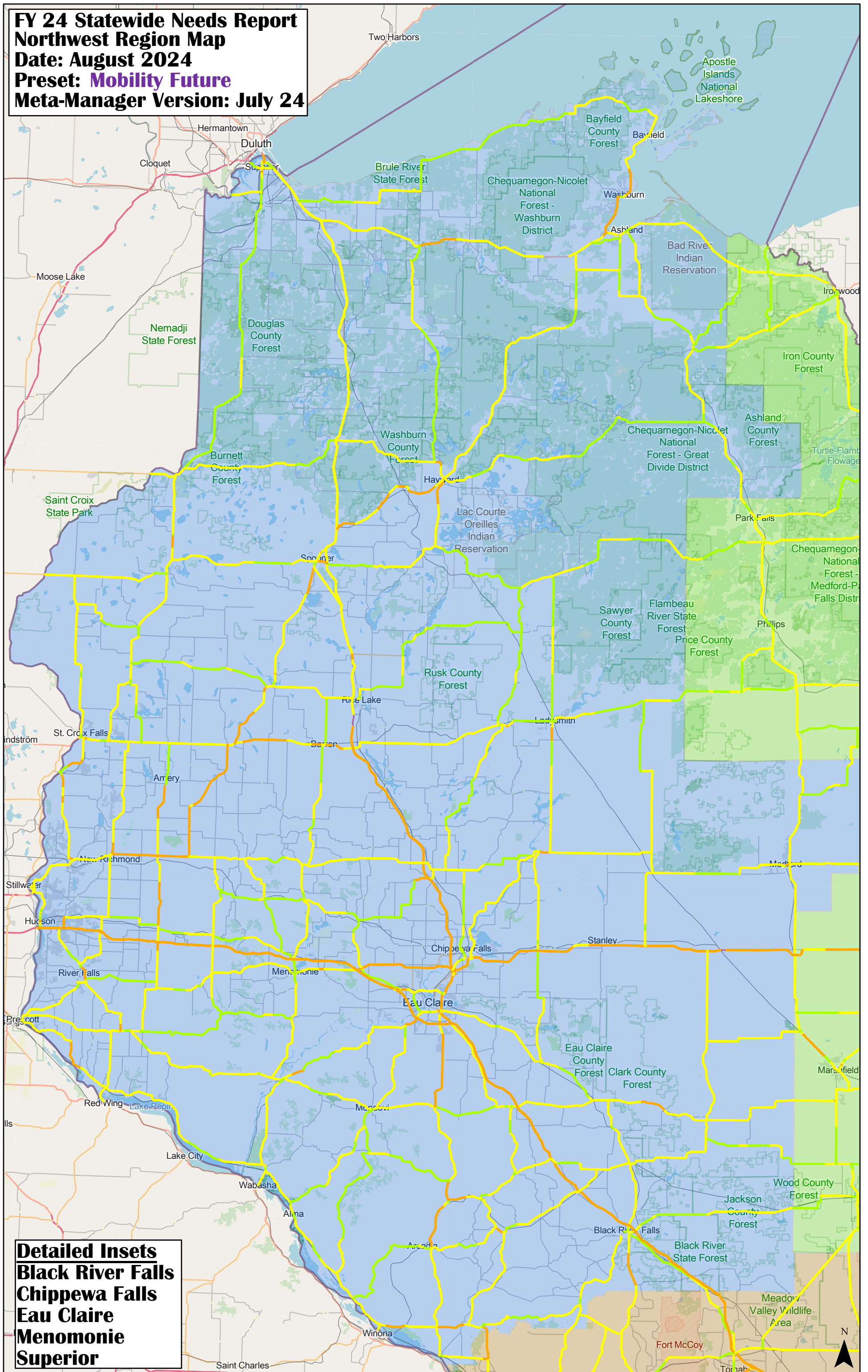


Detailed Insets
Black River Falls
Chippewa Falls
Eau Claire
Menomonie
Superior

FY 24 Statewide Needs Report
Northwest Region Map
Date: August 2024
Preset: Freight Performance
Meta-Manager Version: July 24

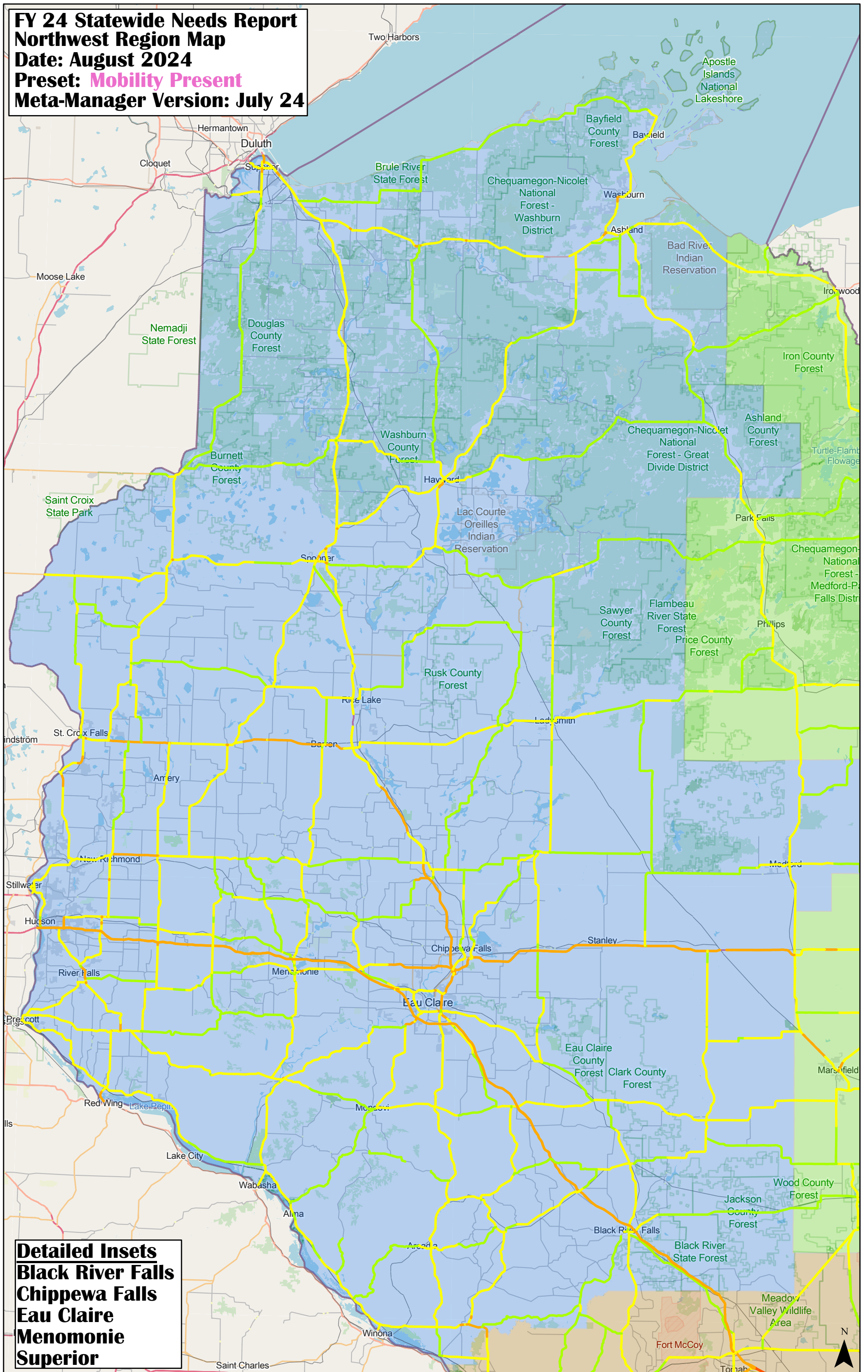


FY 24 Statewide Needs Report
Northwest Region Map
Date: August 2024
Preset: Mobility Future
Meta-Manager Version: July 24



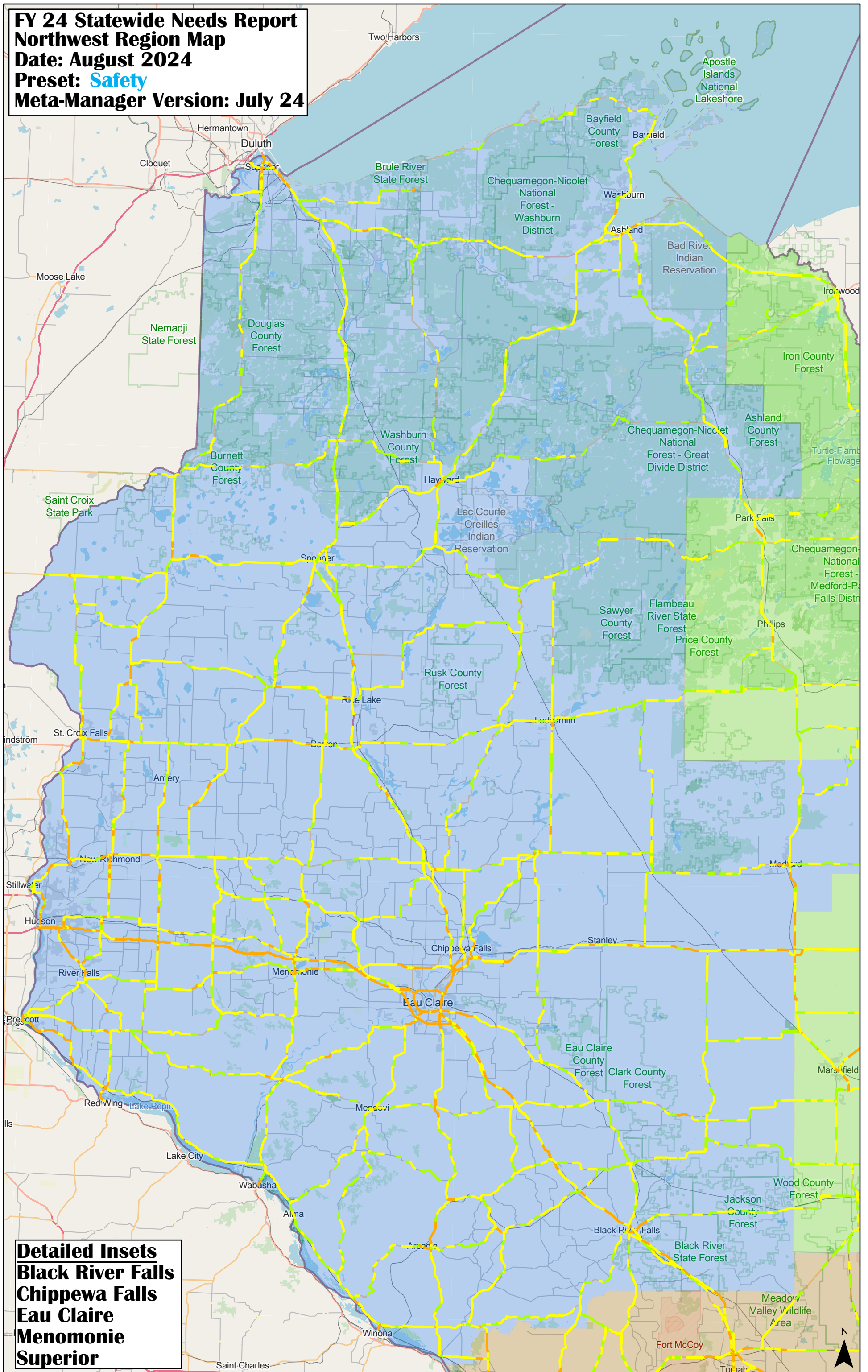
Detailed Insets
Black River Falls
Chippewa Falls
Eau Claire
Menomonie
Superior

FY 24 Statewide Needs Report
Northwest Region Map
Date: August 2024
Preset: Mobility Present
Meta-Manager Version: July 24



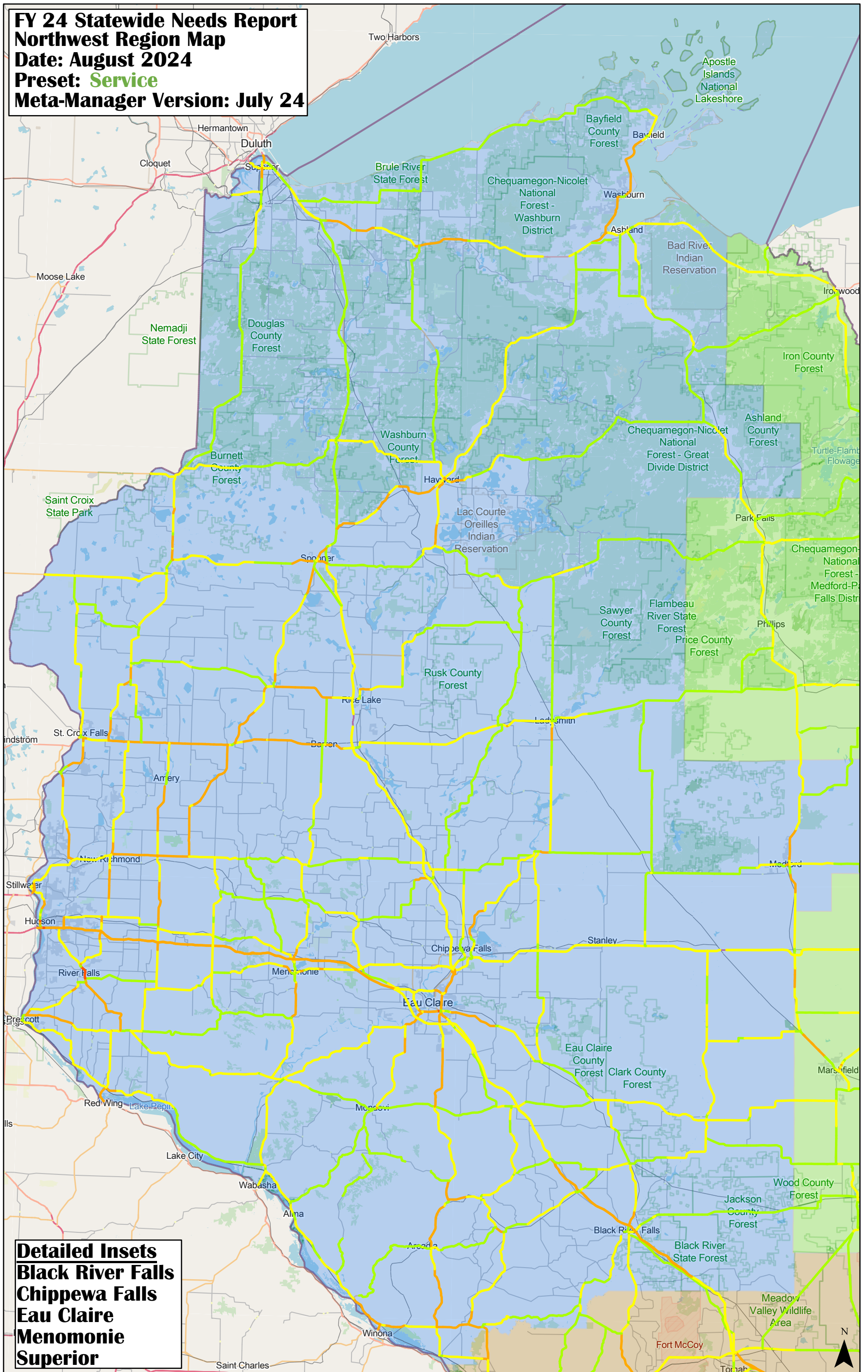
Detailed Insets
Black River Falls
Chippewa Falls
Eau Claire
Menomonie
Superior

FY 24 Statewide Needs Report
Northwest Region Map
Date: August 2024
Preset: Safety
Meta-Manager Version: July 24

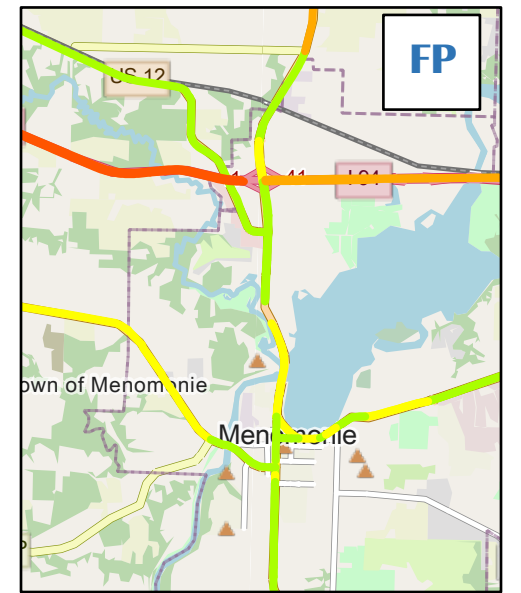
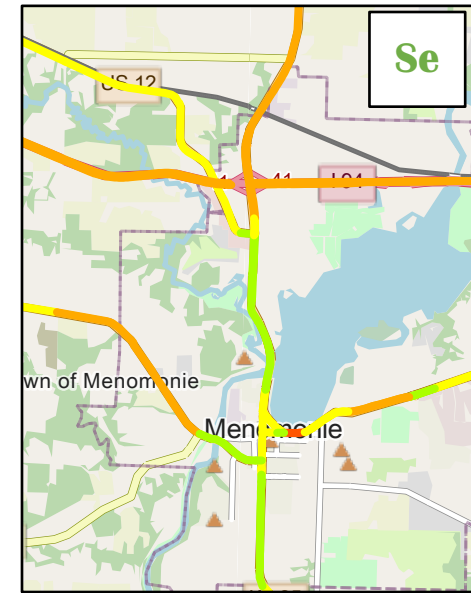
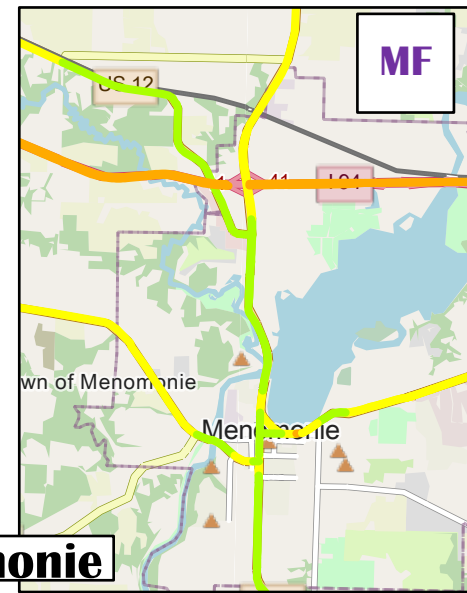
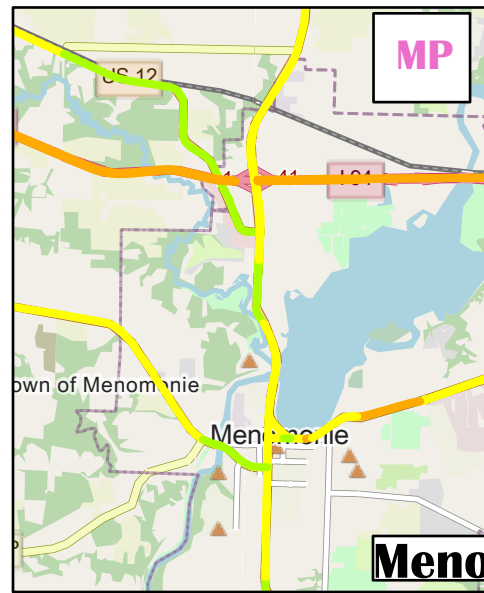
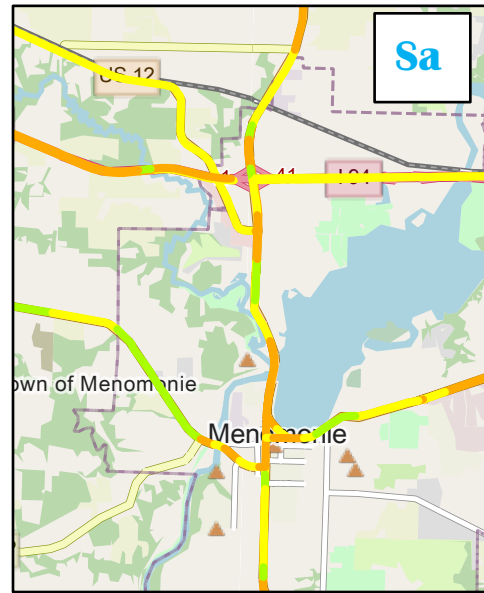
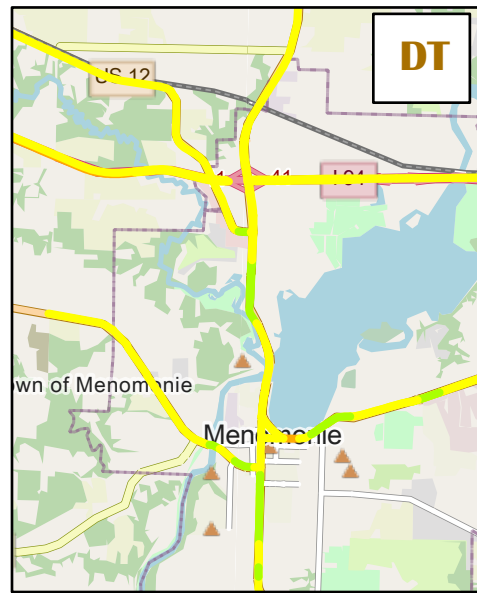


Detailed Insets
Black River Falls
Chippewa Falls
Eau Claire
Menomonie
Superior

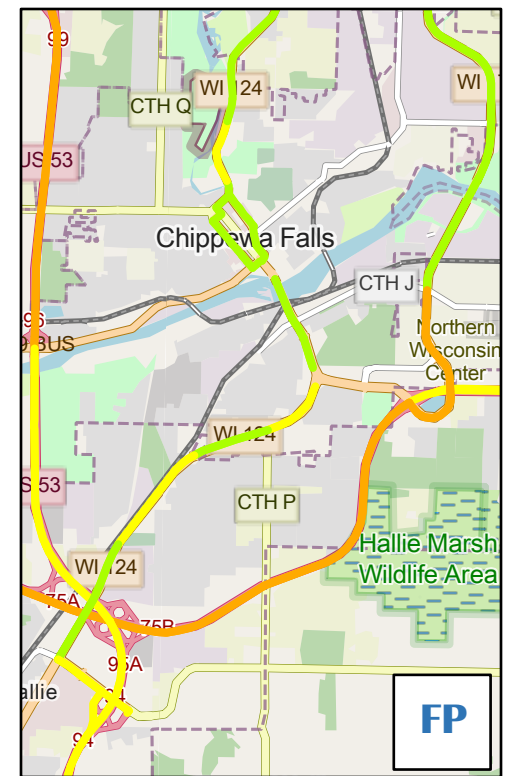
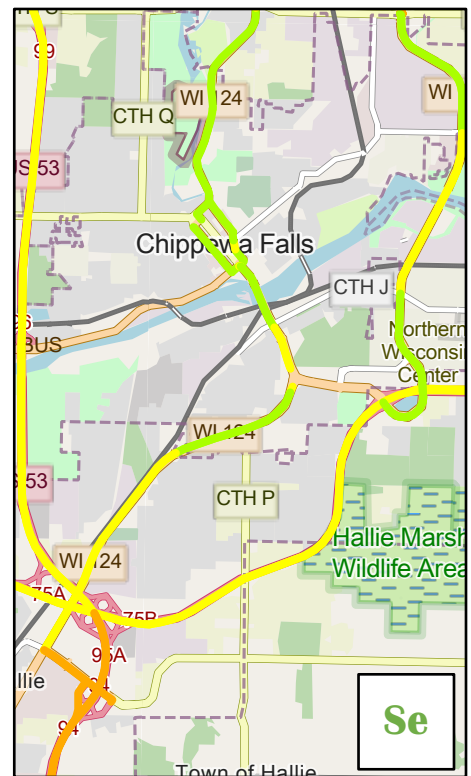
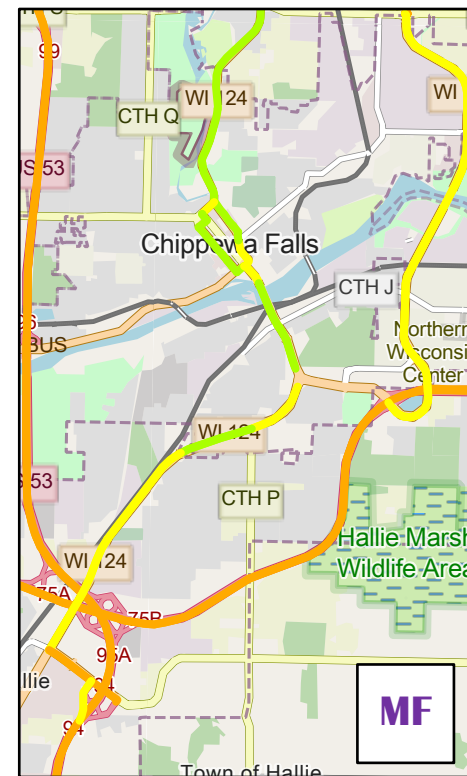
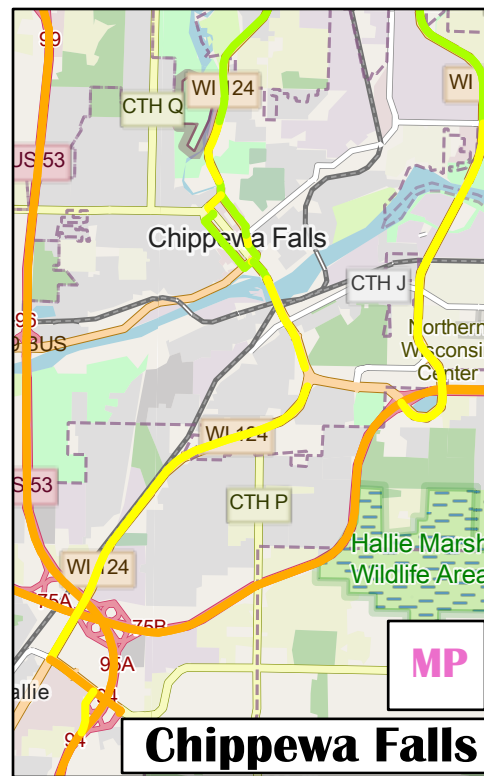
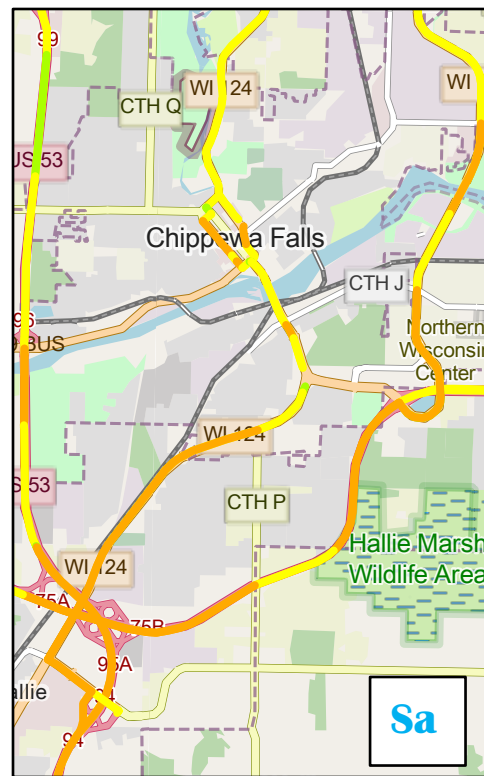
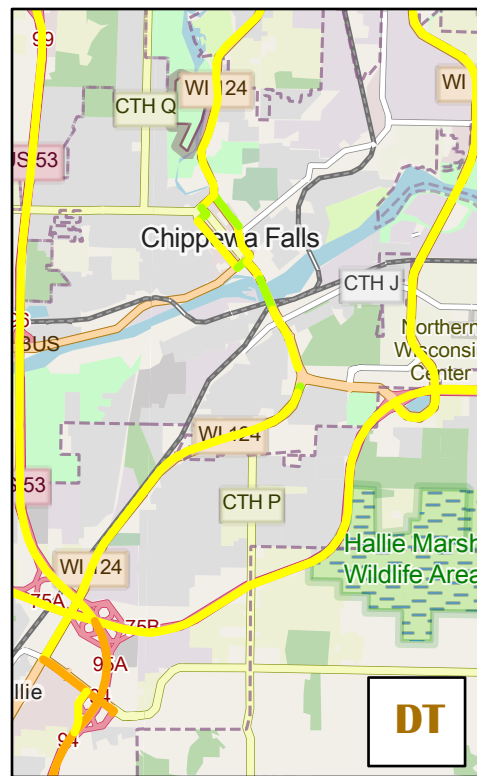
FY 24 Statewide Needs Report
Northwest Region Map
Date: August 2024
Preset: Service
Meta-Manager Version: July 24



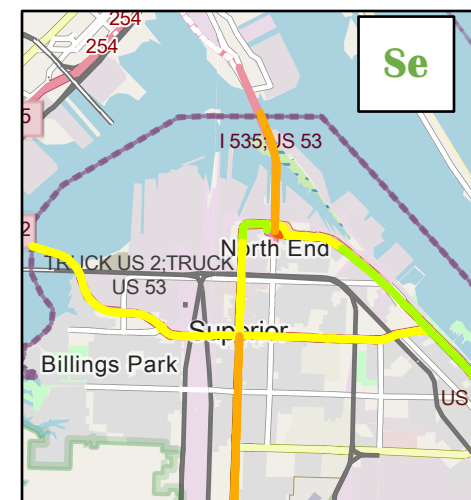
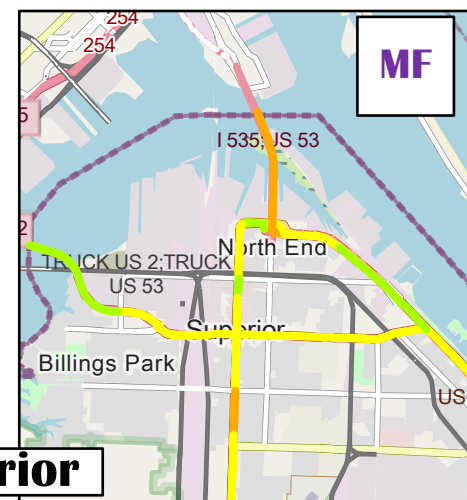
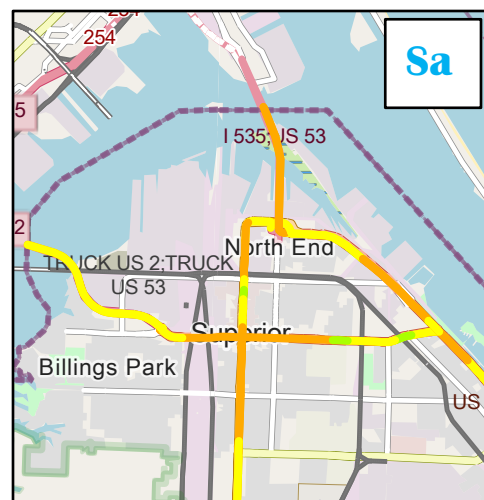
Detailed Insets
Black River Falls
Chippewa Falls
Eau Claire
Menomonie
Superior



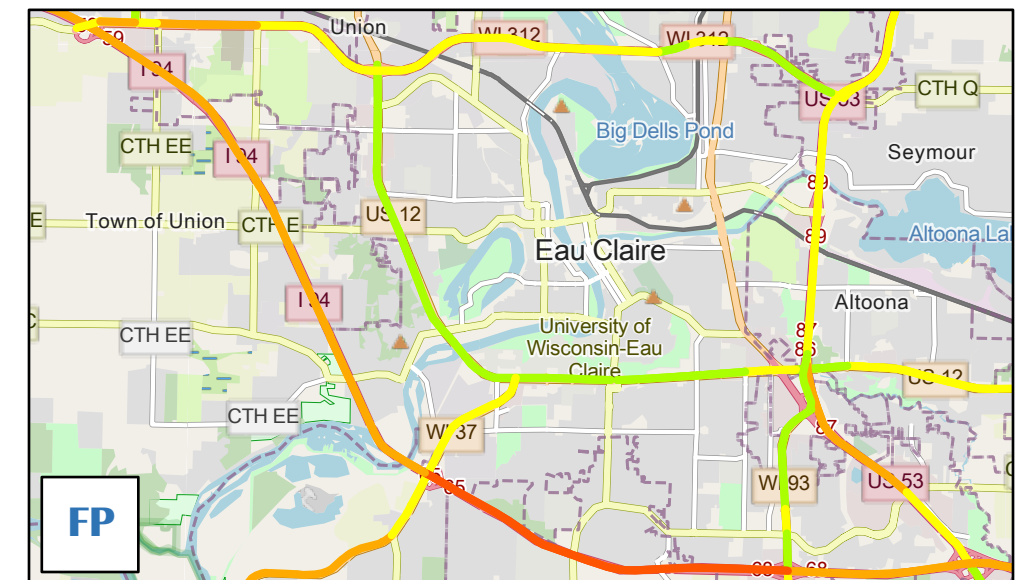
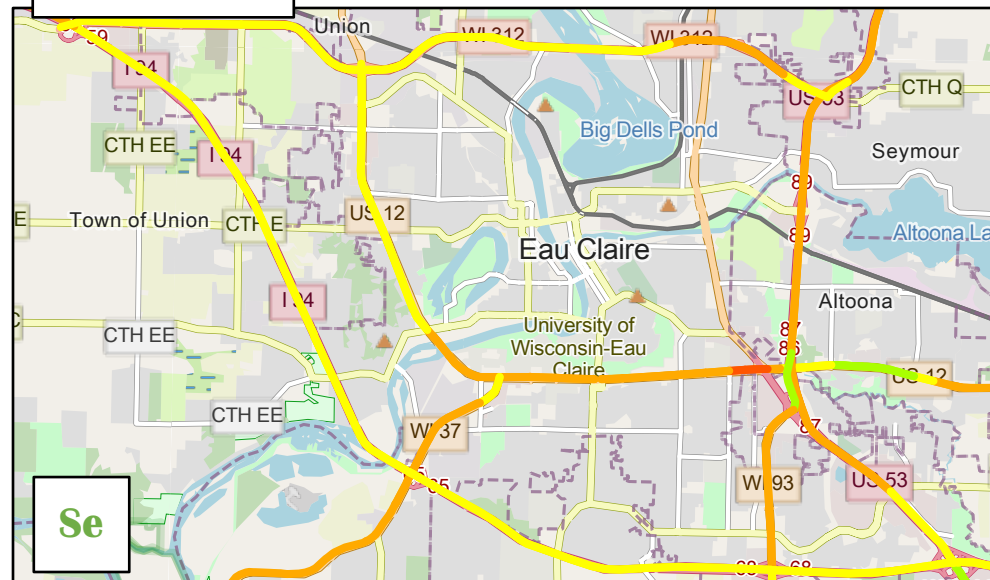
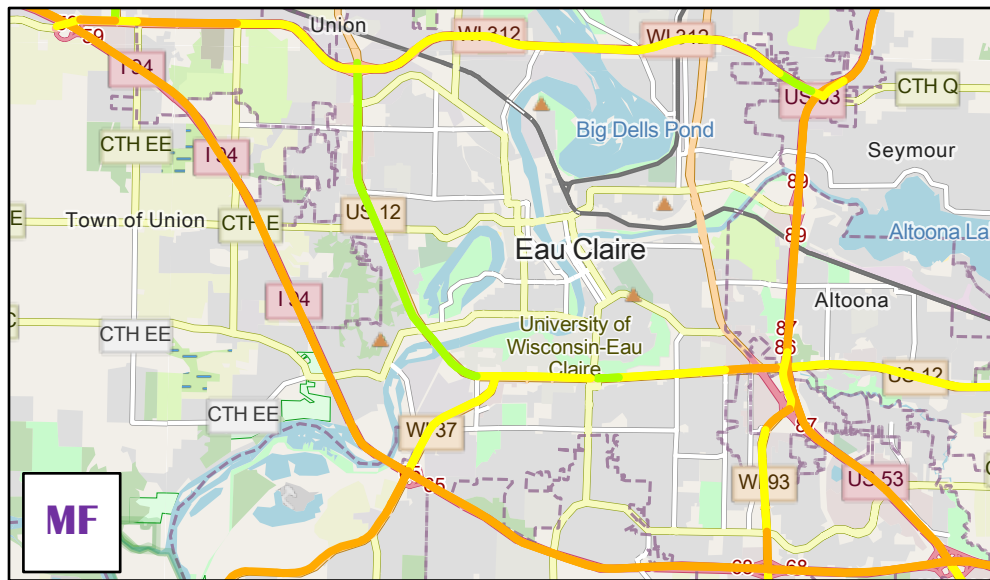
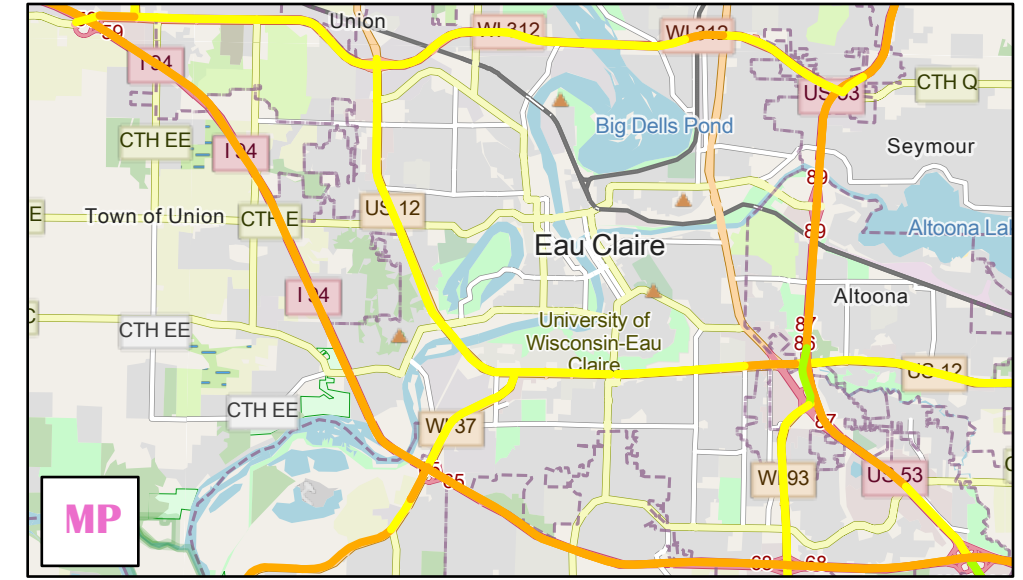
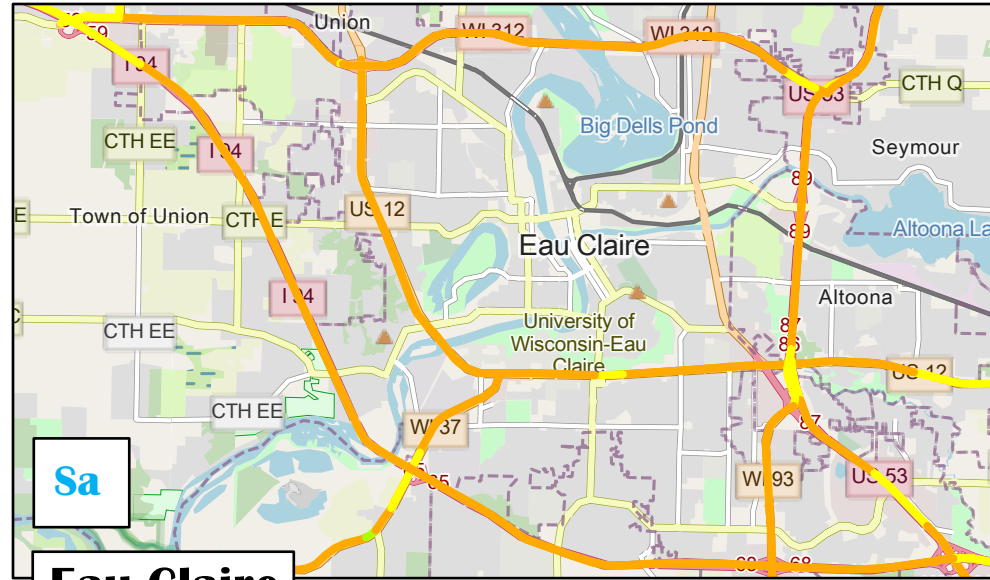
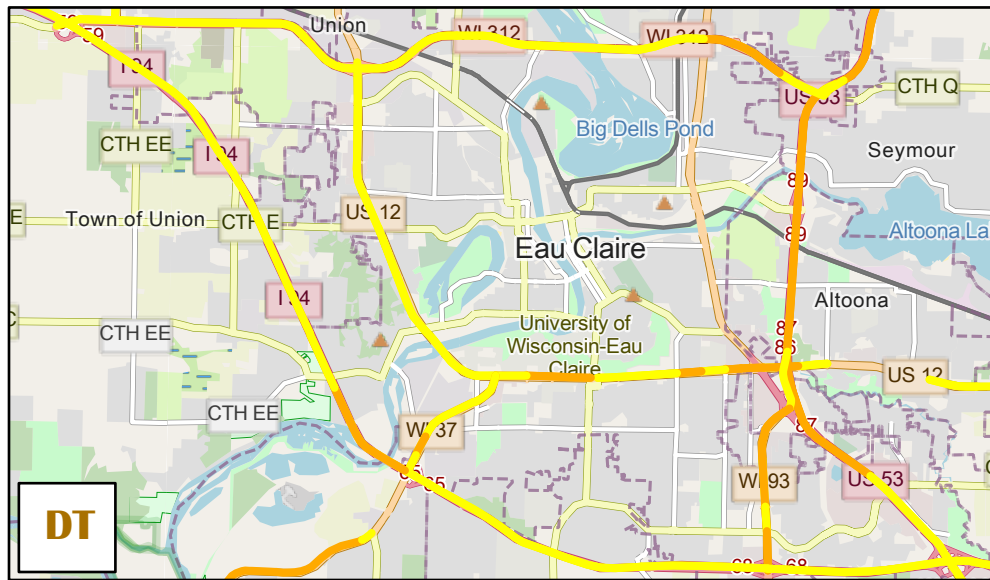
Menomonie



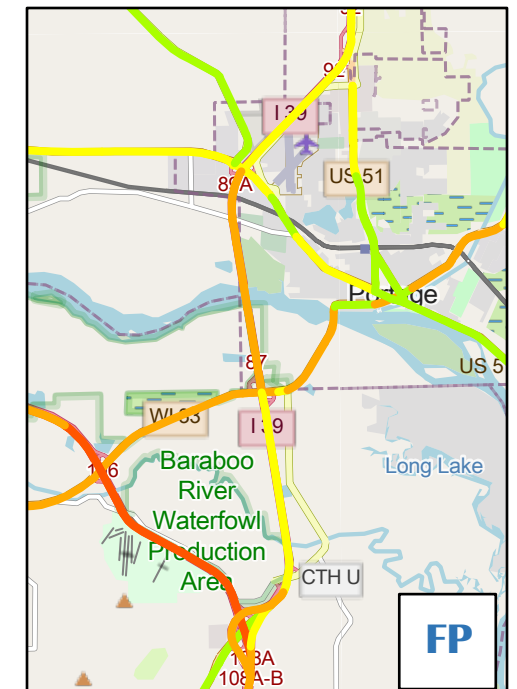
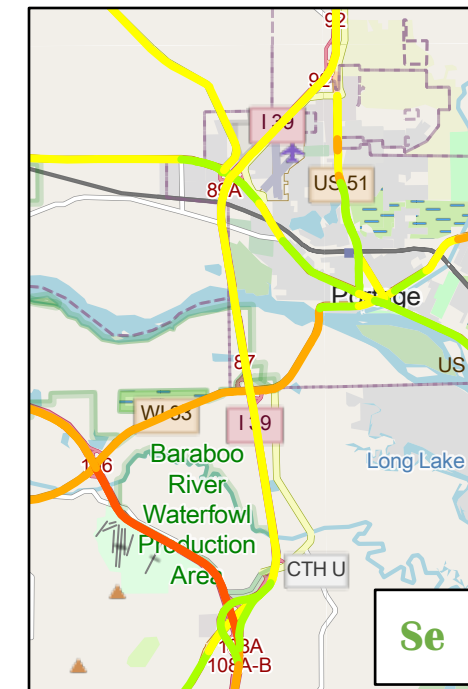
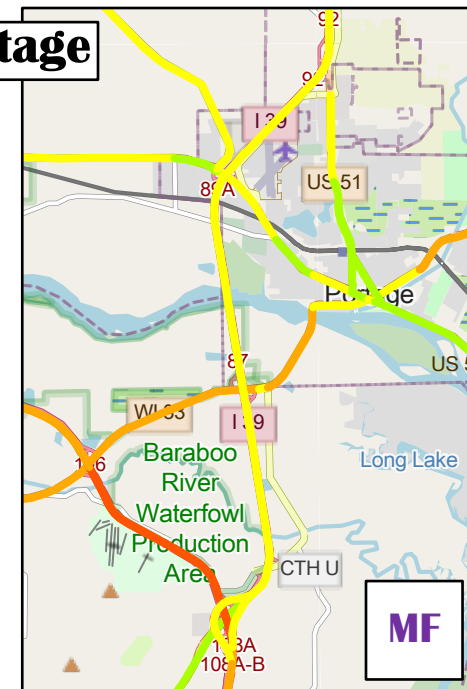
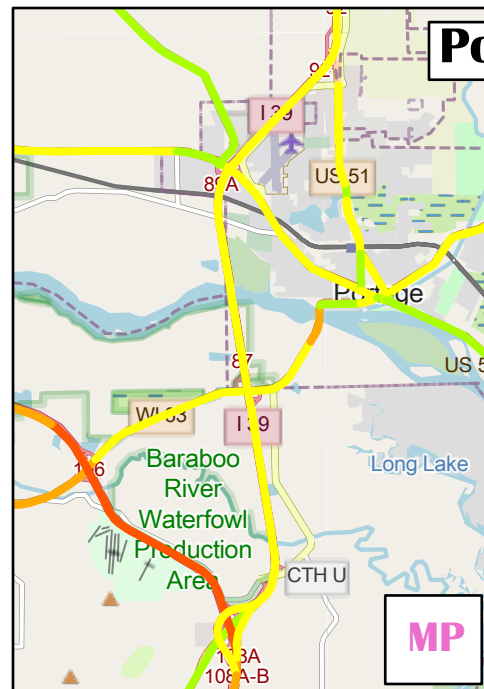
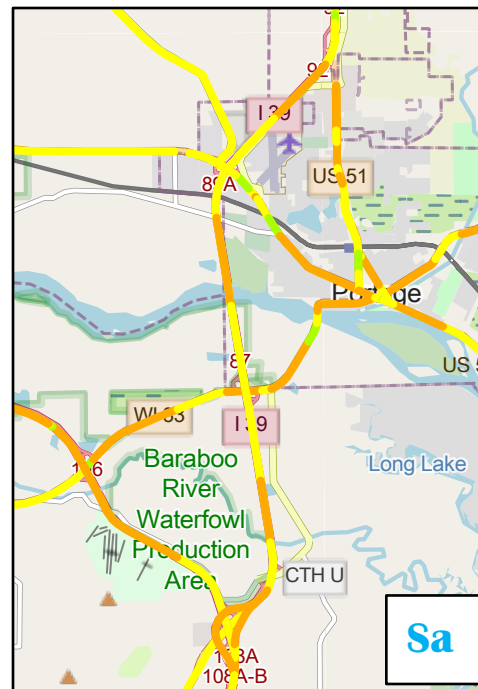
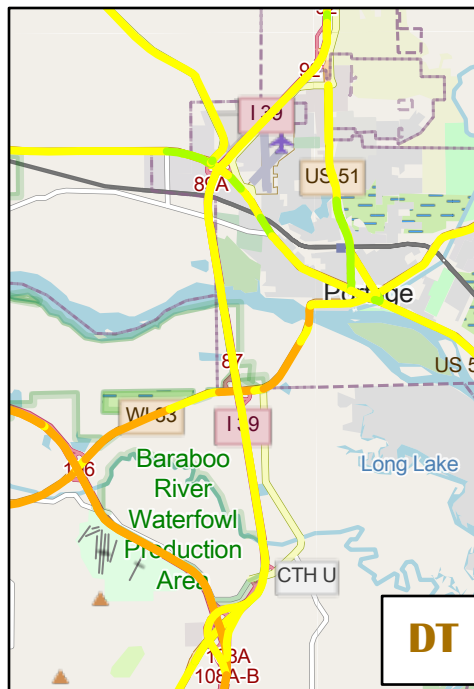
Chippewa Falls



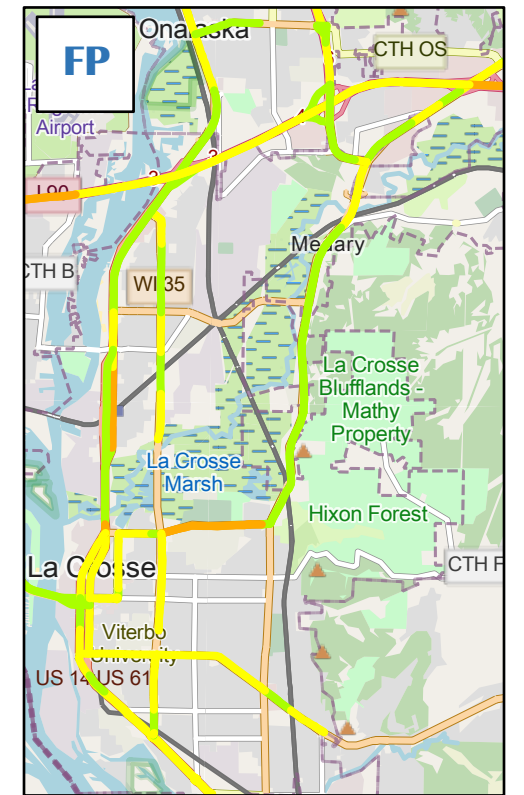
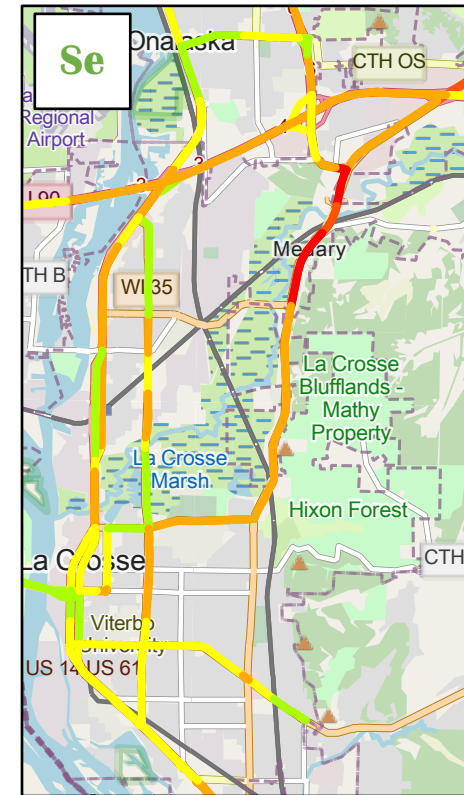
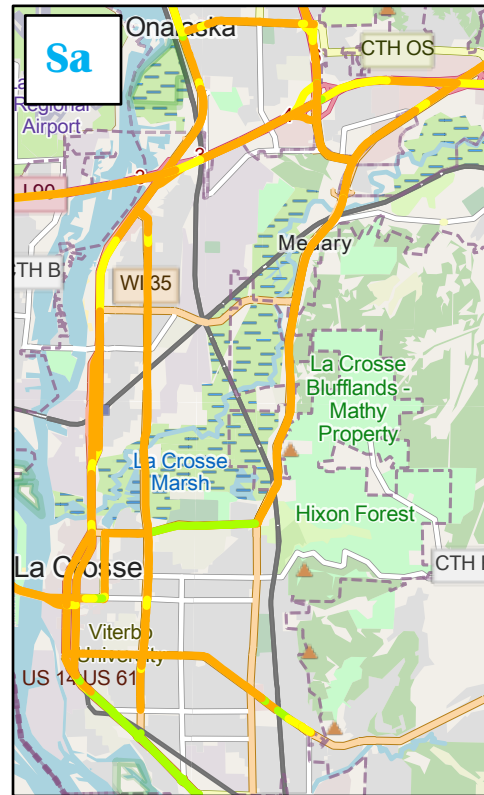
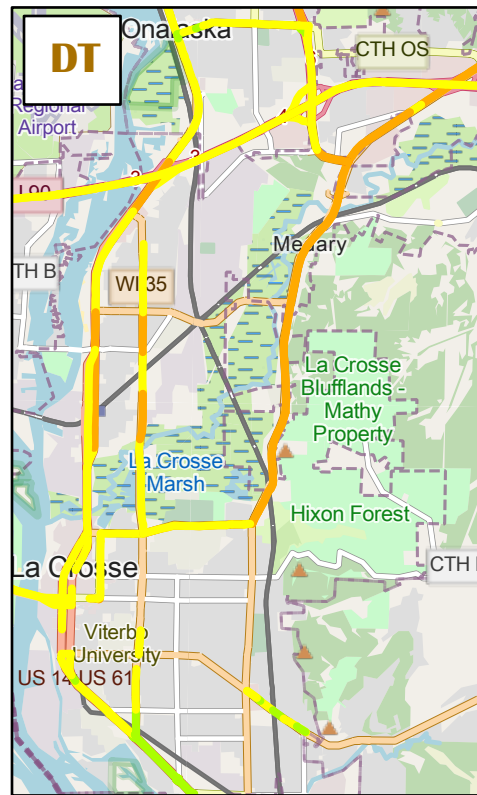
Superior



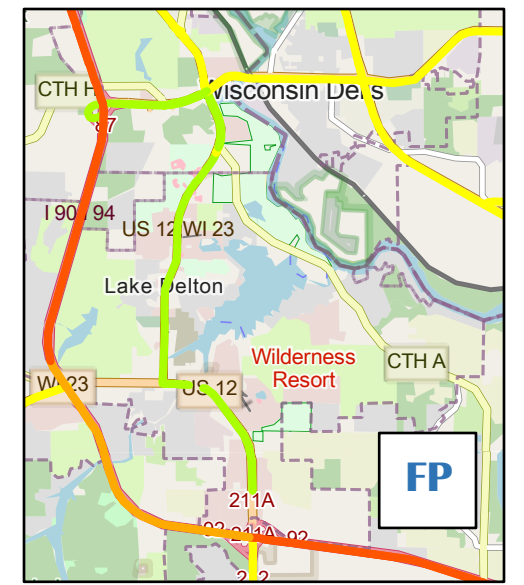
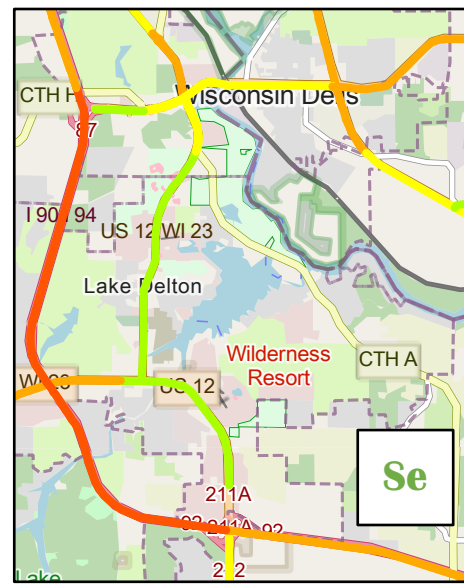
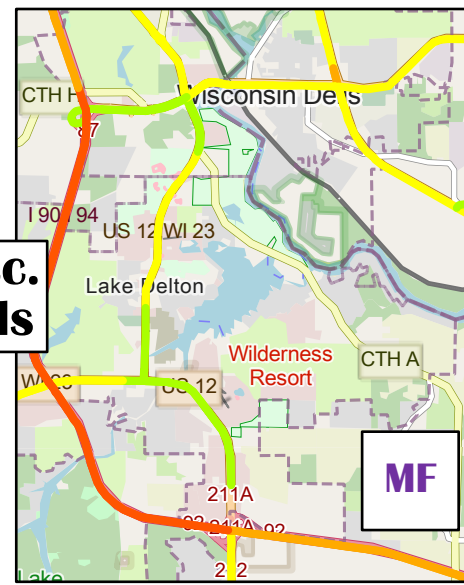
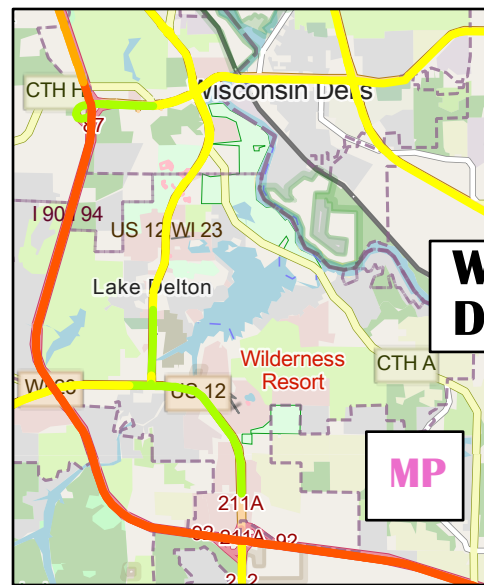
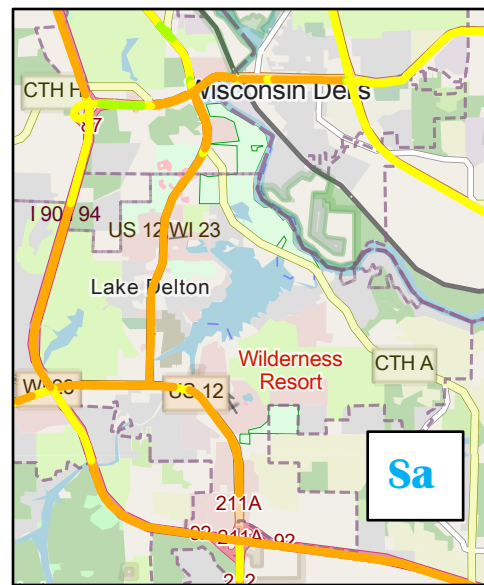
Eau Claire



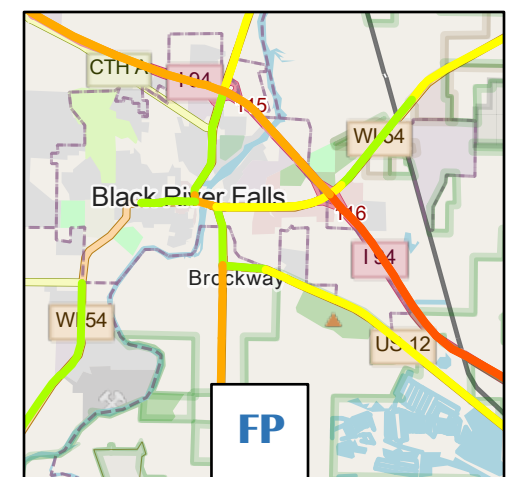
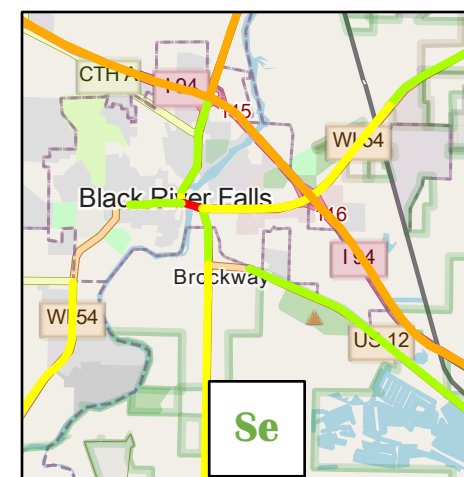
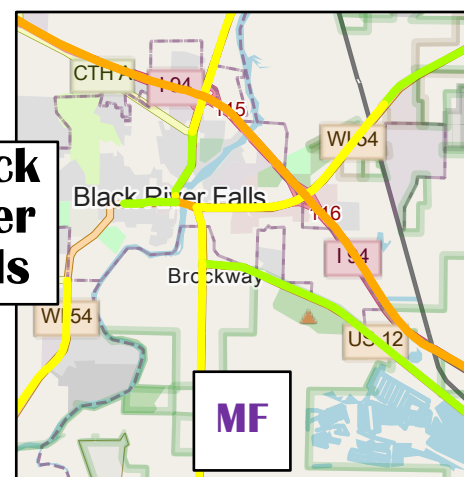
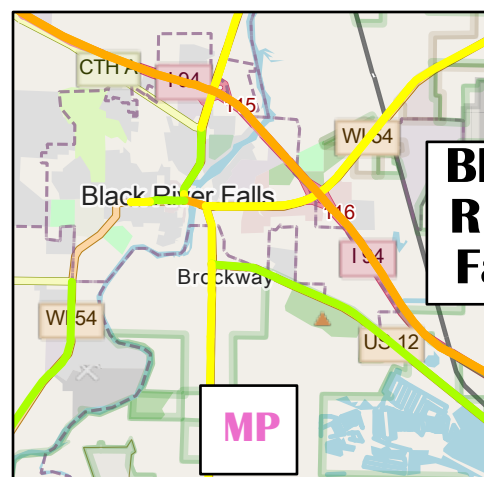
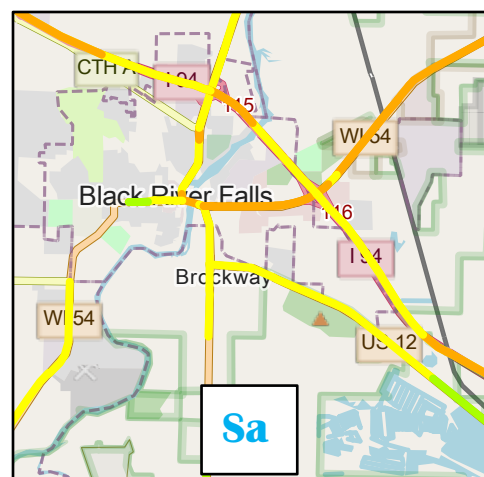
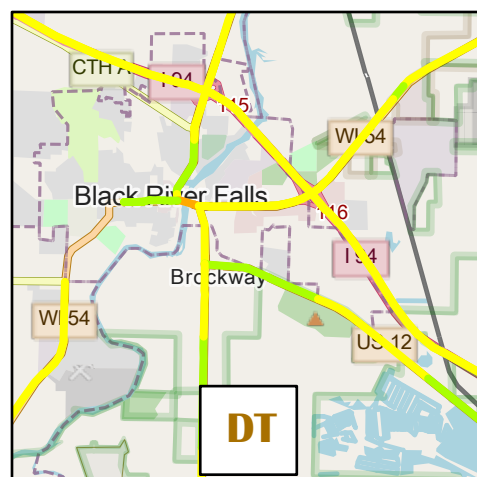
Portage



La Crosse



Wisc. Dells



Black River Falls